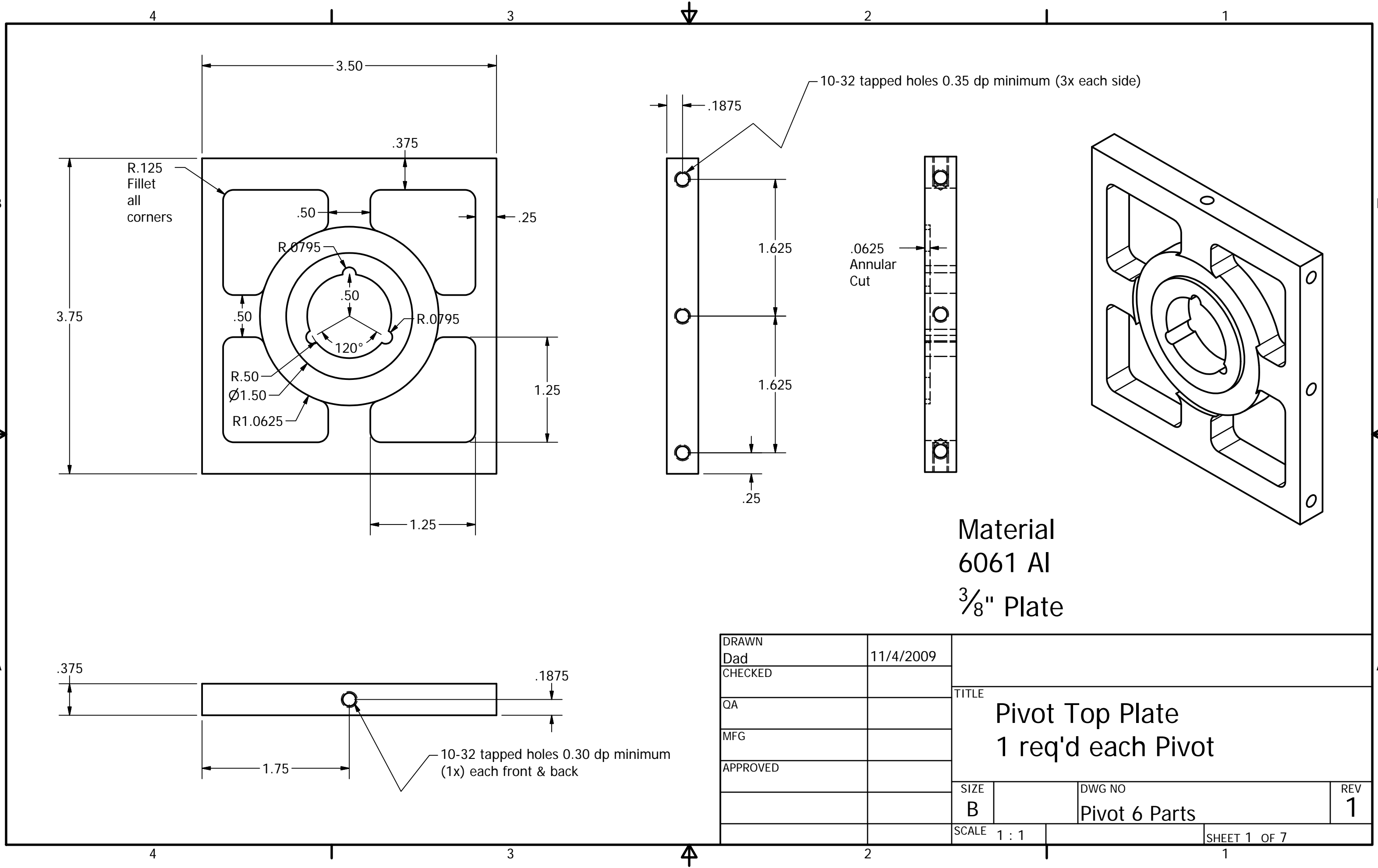


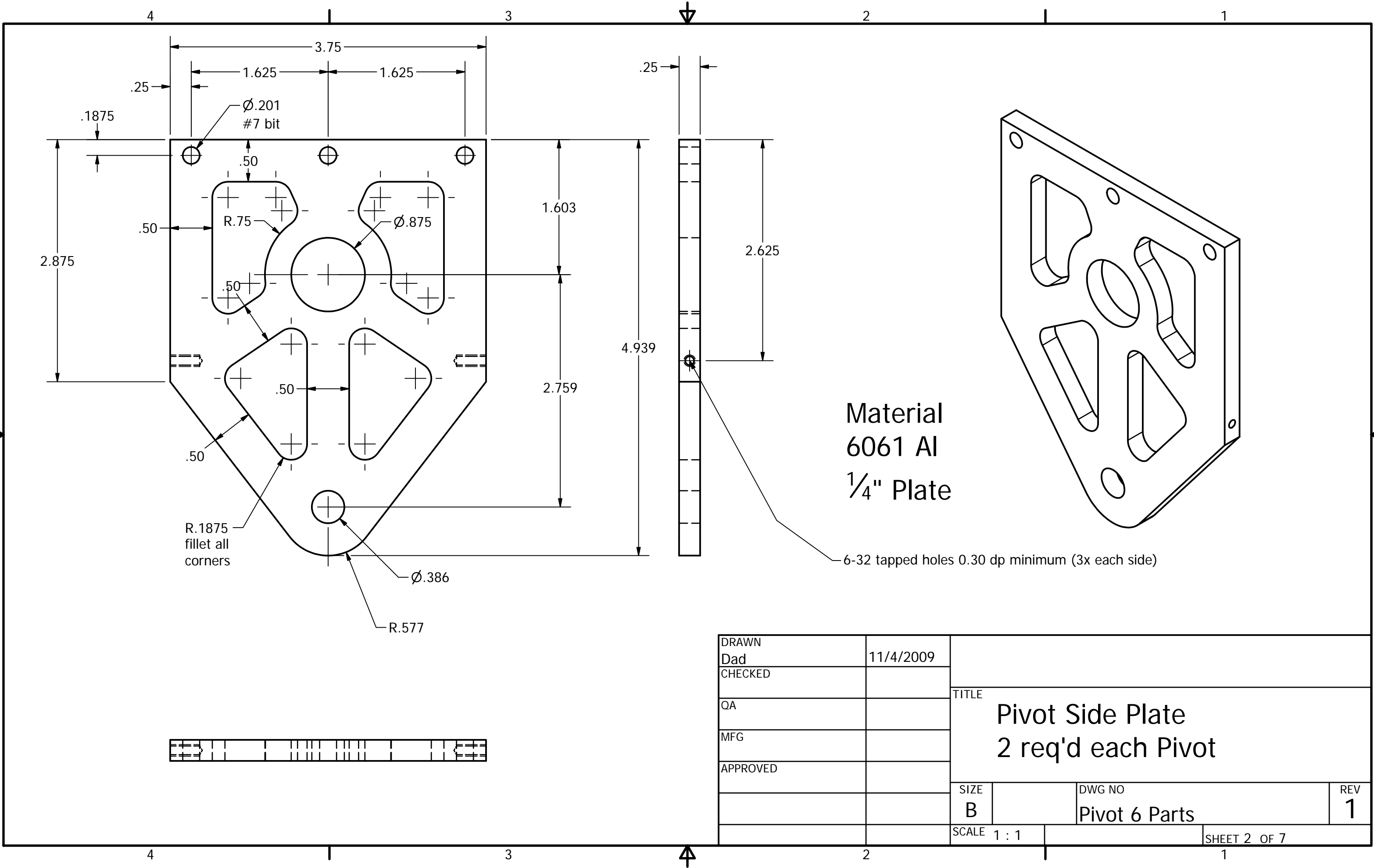
PRODUCED BY AN AUTODESK EDUCATIONAL PRODUCT

PRODUCED BY AN AUTODESK EDUCATIONAL PRODUCT

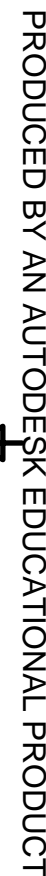


PRODUCED BY AN AUTODESK EDUCATIONAL PRODUCT

PRODUCED BY AN AUTODESK EDUCATIONAL PRODUCT

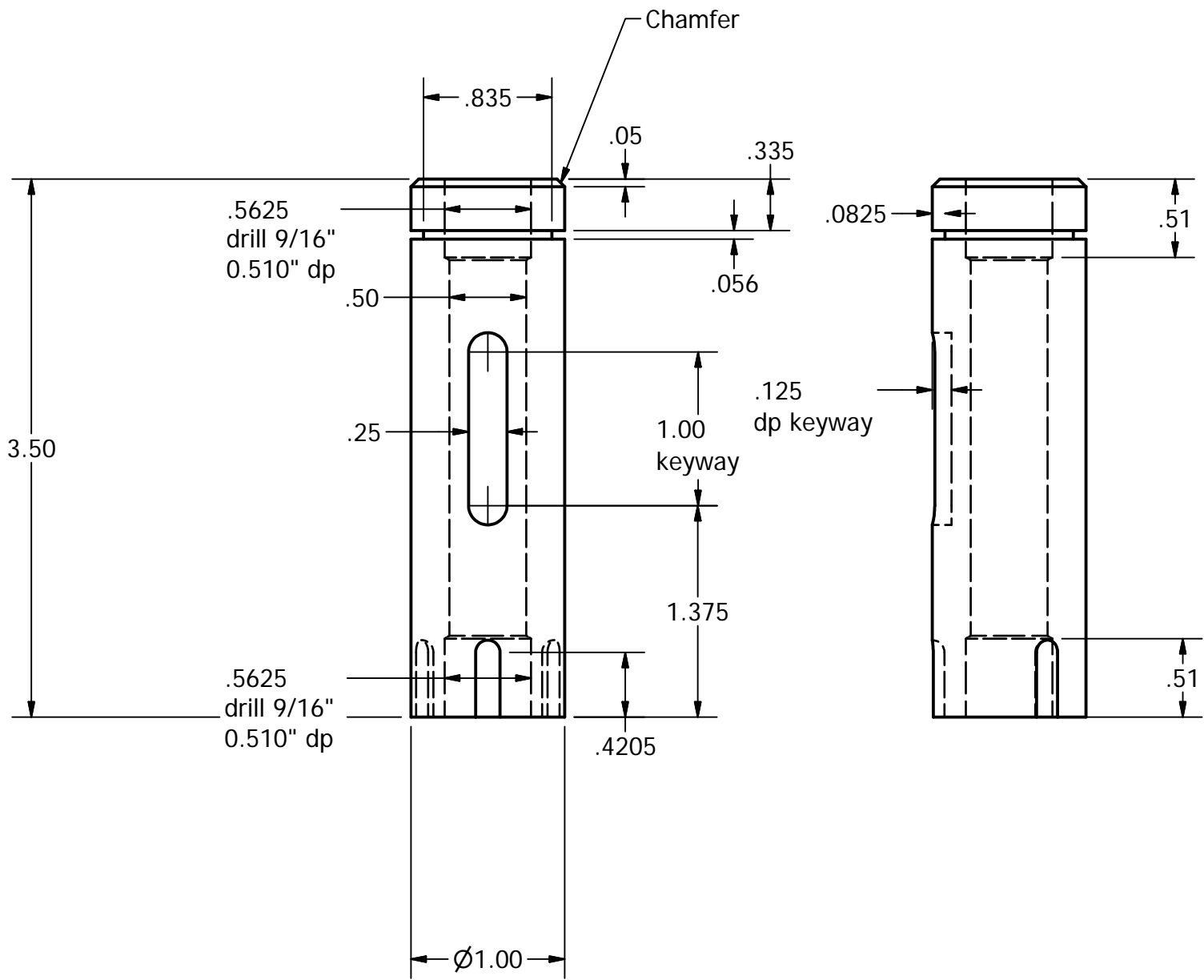


DRAWN	Dad	11/4/2009	TITLE Pivot Side Plate 2 req'd each Pivot		
CHECKED					
QA					
MFG					
APPROVED			SIZE B		
			DWG NO	Pivot 6 Parts	REV 1
			SCALE 1 : 1	SHEET 2 OF 7	



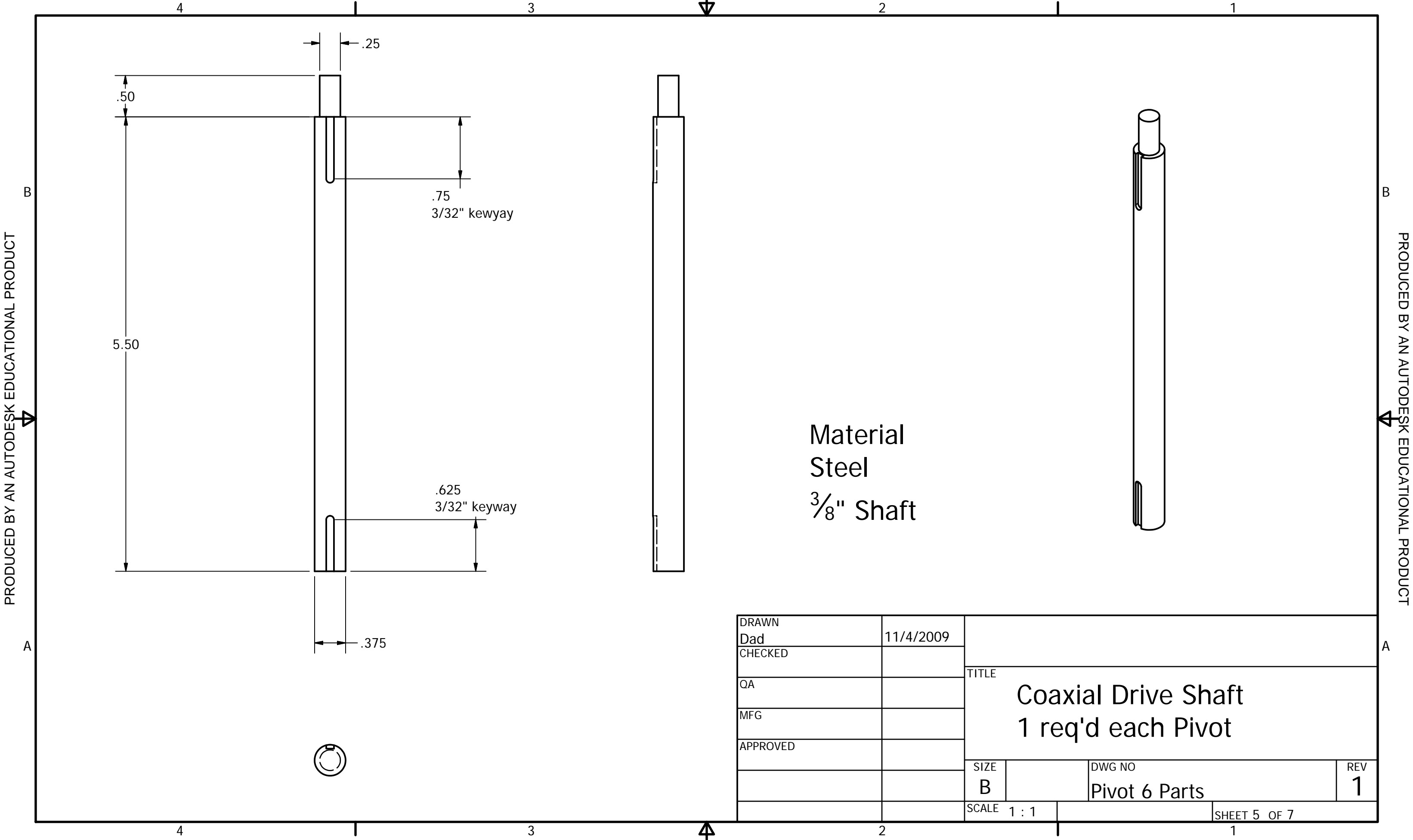
PRODUCED BY AN AUTODESK EDUCATIONAL PRODUCT

PRODUCED BY AN AUTODESK EDUCATIONAL PRODUCT



Material  
6061 Al  
1" OD x 0.25" wall tubing

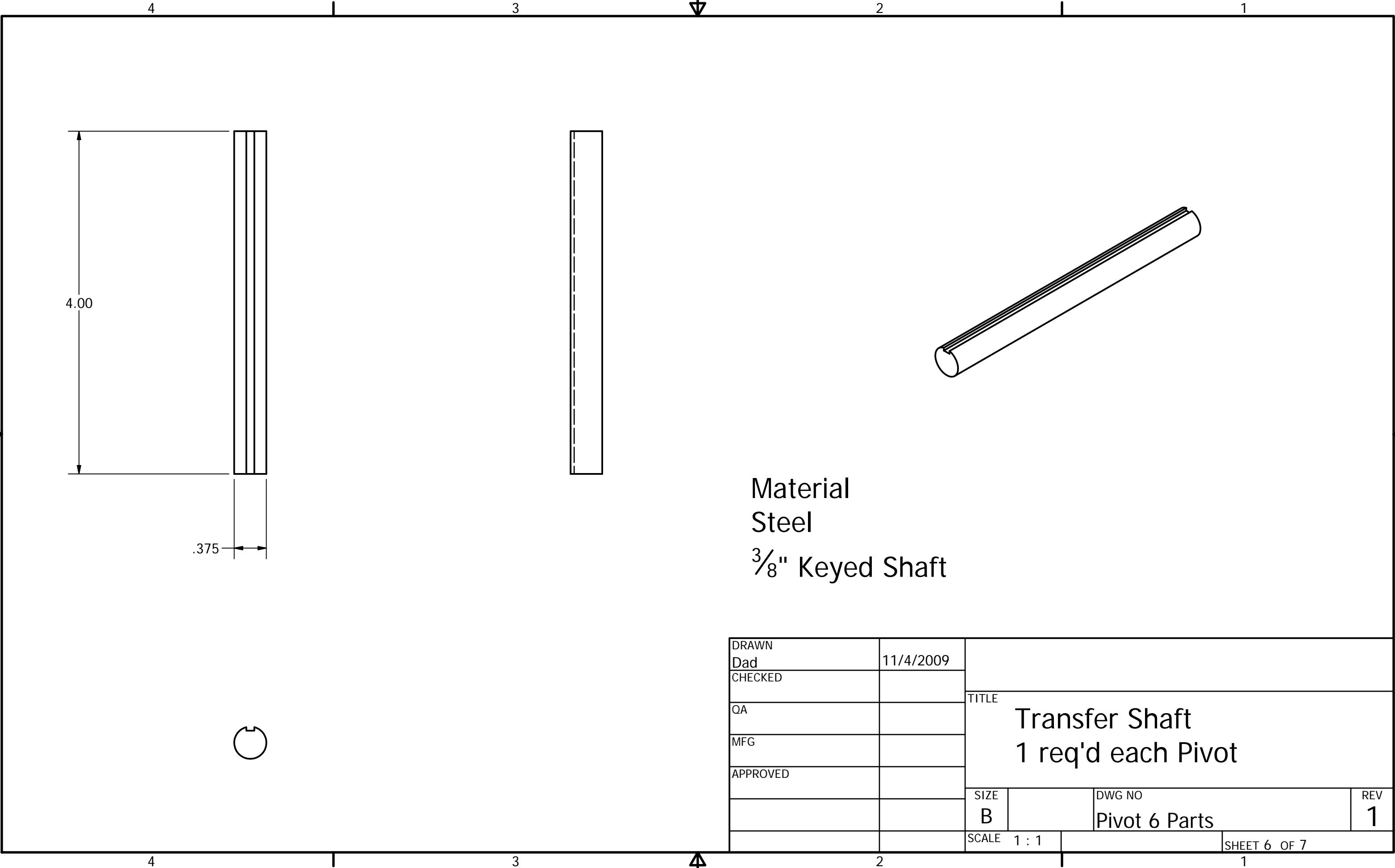
DRAWN	11/4/2009	TITLE Pivot Tube 1 req'd each Pivot		
Dad				
CHECKED				
QA				
MFG		SIZE B		
APPROVED				
		DWG NO	Pivot 6 Parts	REV 1
		SCALE 1 : 1	SHEET 4 OF 7	



DRAWN	Dad	11/4/2009	TITLE Coaxial Drive Shaft 1 req'd each Pivot		
CHECKED					
QA					
MFG					
APPROVED			SIZE B		
			DWG NO		REV
			Pivot 6 Parts		1
		SCALE	1 : 1	SHEET 5 OF 7	

PRODUCED BY AN AUTODESK EDUCATIONAL PRODUCT

PRODUCED BY AN AUTODESK EDUCATIONAL PRODUCT

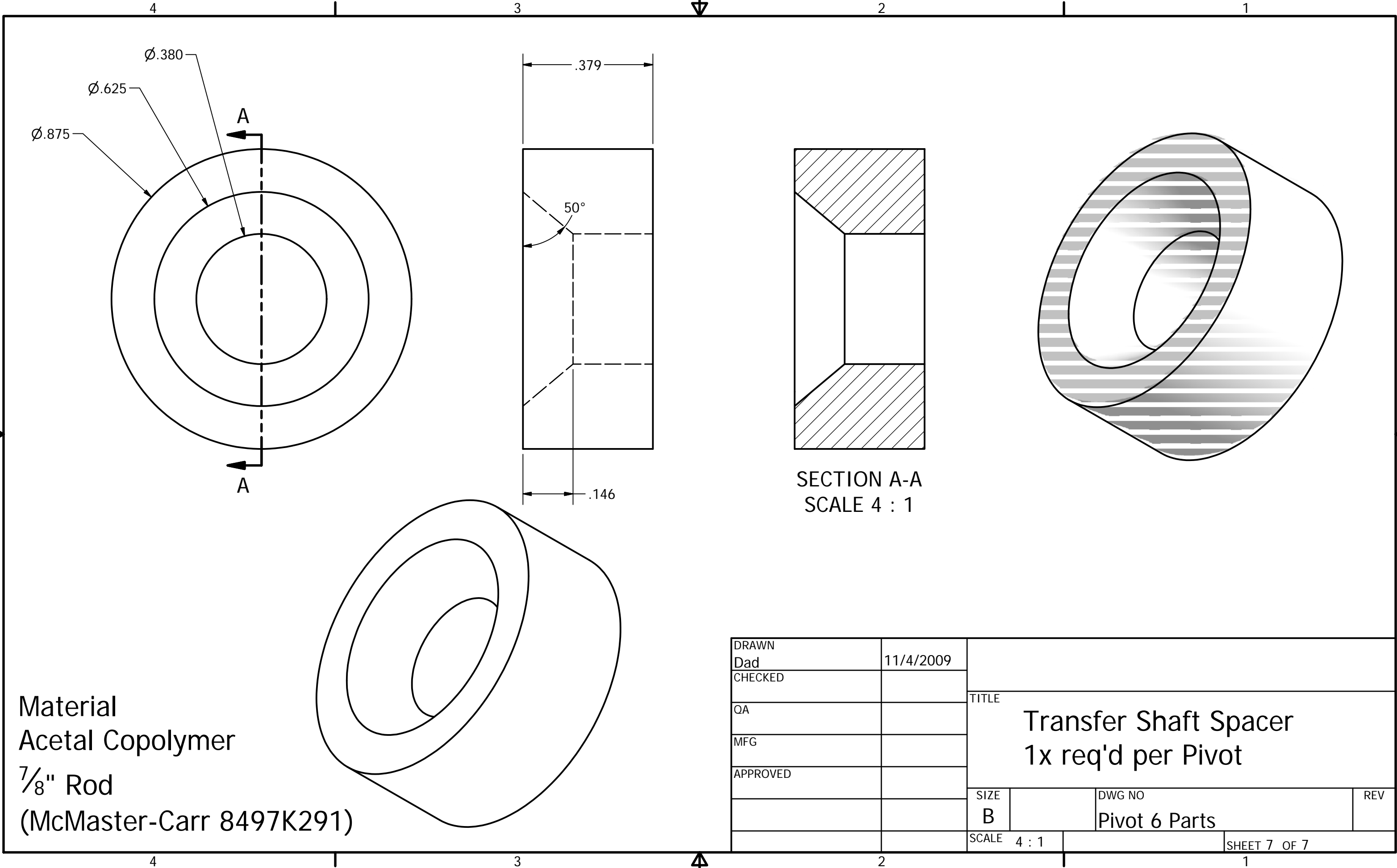


Material  
Steel  
 $\frac{3}{8}$ " Keyed Shaft

DRAWN		11/4/2009	TITLE Transfer Shaft 1 req'd each Pivot		
Dad					
CHECKED					
QA					
MFG			SIZE B		
APPROVED					
			DWG NO	Pivot 6 Parts	REV 1
			SCALE 1 : 1	SHEET 6 OF 7	

PRODUCED BY AN AUTODESK EDUCATIONAL PRODUCT

PRODUCED BY AN AUTODESK EDUCATIONAL PRODUCT



Material  
Acetal Copolymer  
 $\frac{7}{8}$ " Rod  
(McMaster-Carr 8497K291)

DRAWN	11/4/2009	TITLE Transfer Shaft Spacer 1x req'd per Pivot		
Dad				
CHECKED				
QA				
MFG		SIZE B		
APPROVED				
		DWG NO	Pivot 6 Parts	REV
		SCALE 4 : 1	SHEET 7 OF 7	