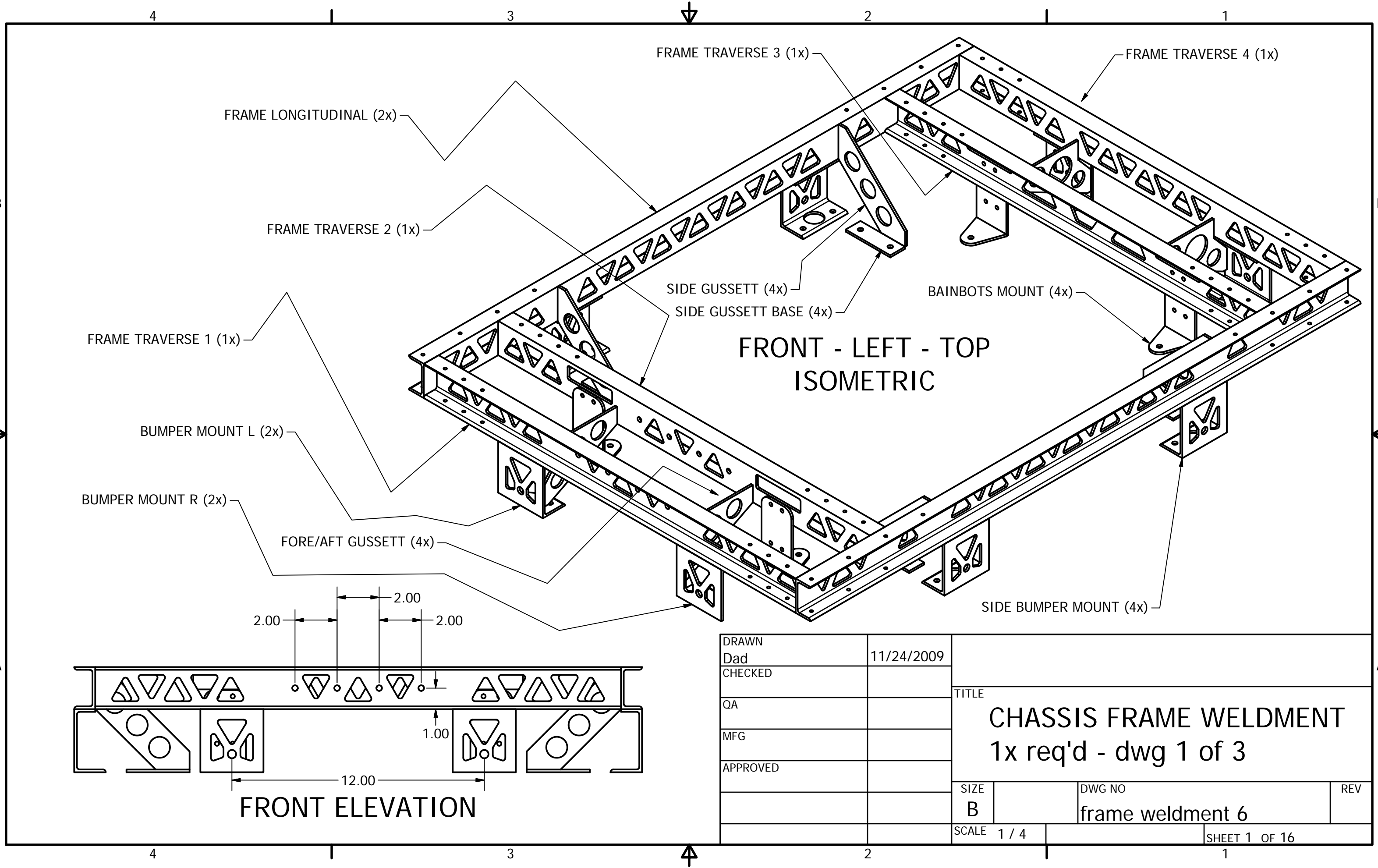


PRODUCED BY AN AUTODESK EDUCATIONAL PRODUCT

PRODUCED BY AN AUTODESK EDUCATIONAL PRODUCT

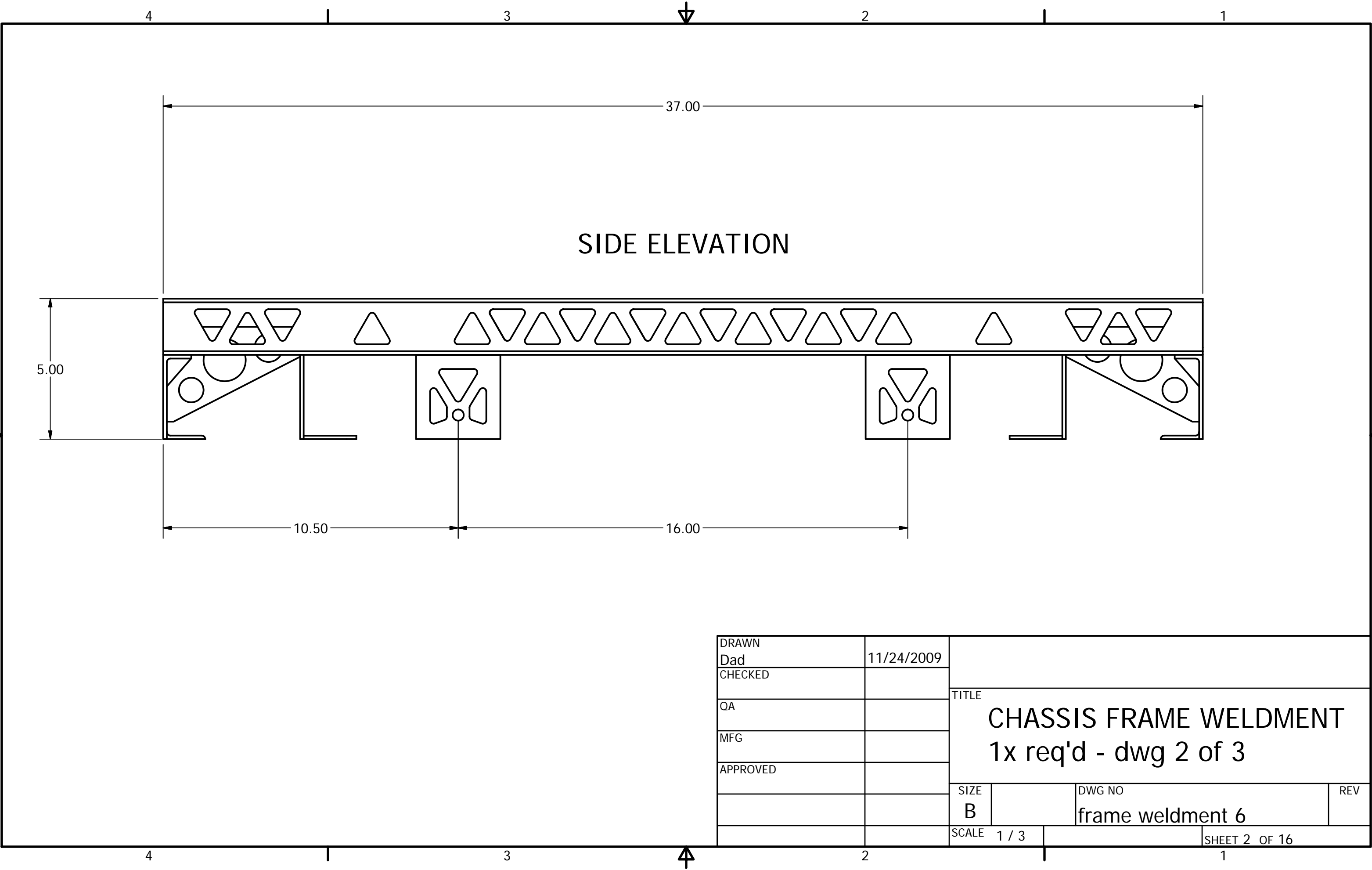


DRAWN	Dad	11/24/2009	TITLE CHASSIS FRAME WELDMENT 1x req'd - dwg 1 of 3		
CHECKED					
QA					
MFG					
APPROVED			SIZE B	DWG NO frame weldment 6	REV
			SCALE 1 / 4	SHEET 1 OF 16	

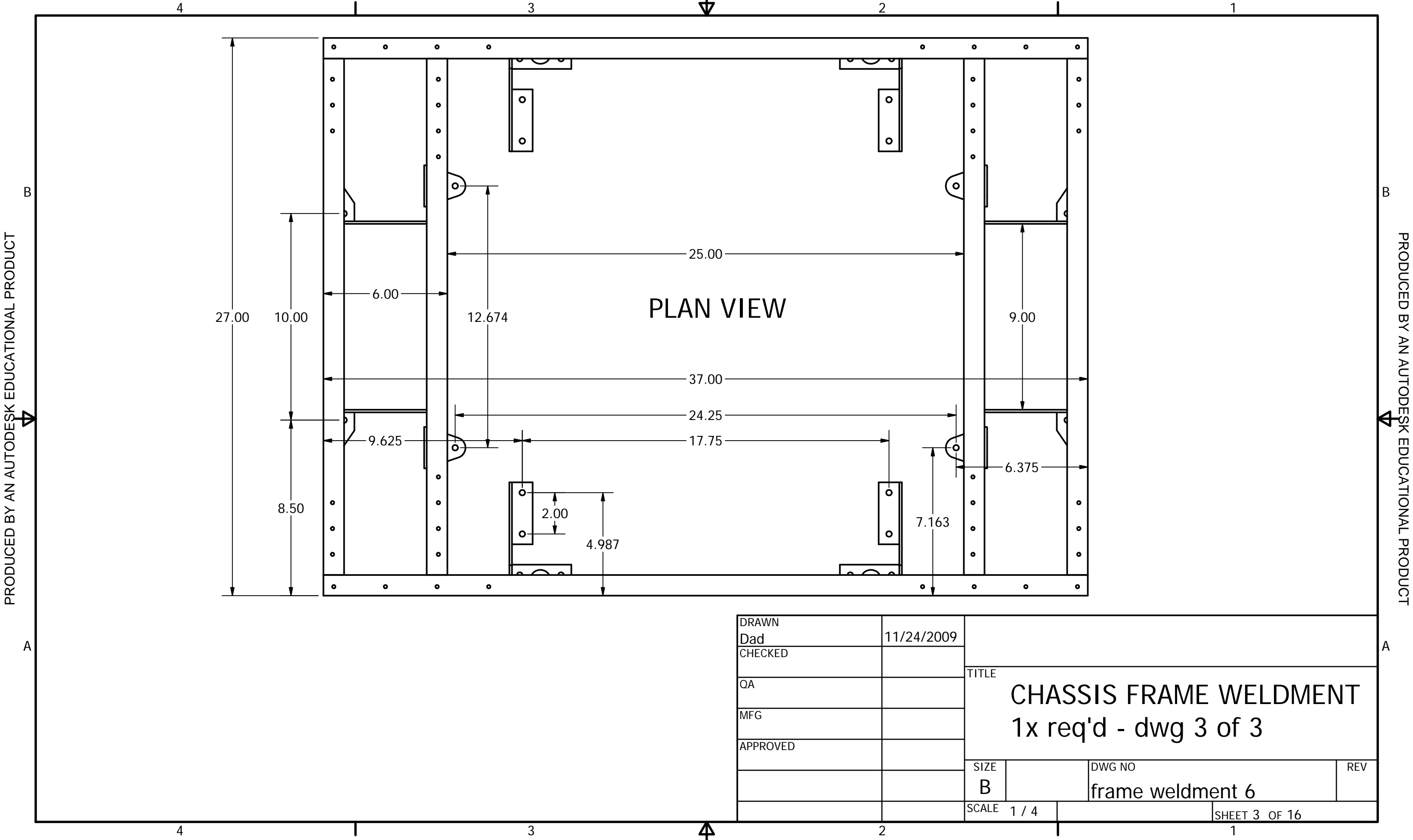
PRODUCED BY AN AUTODESK EDUCATIONAL PRODUCT

PRODUCED BY AN AUTODESK EDUCATIONAL PRODUCT

SIDE ELEVATION



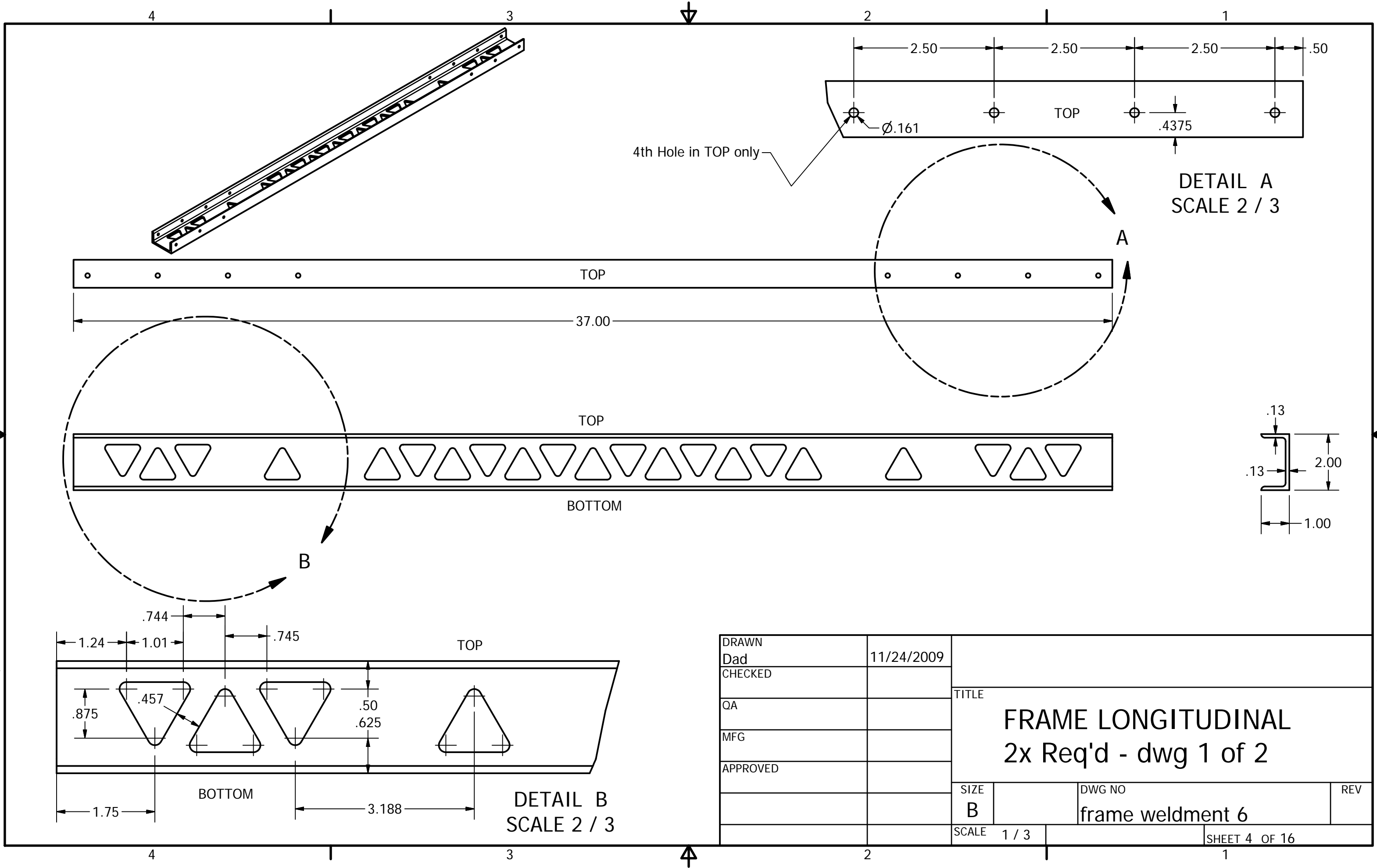
DRAWN	Dad	11/24/2009	TITLE CHASSIS FRAME WELDMENT 1x req'd - dwg 2 of 3		
CHECKED					
QA					
MFG					
APPROVED			SIZE	DWG NO	REV
			B	frame weldment 6	
			SCALE	1 / 3	SHEET 2 OF 16



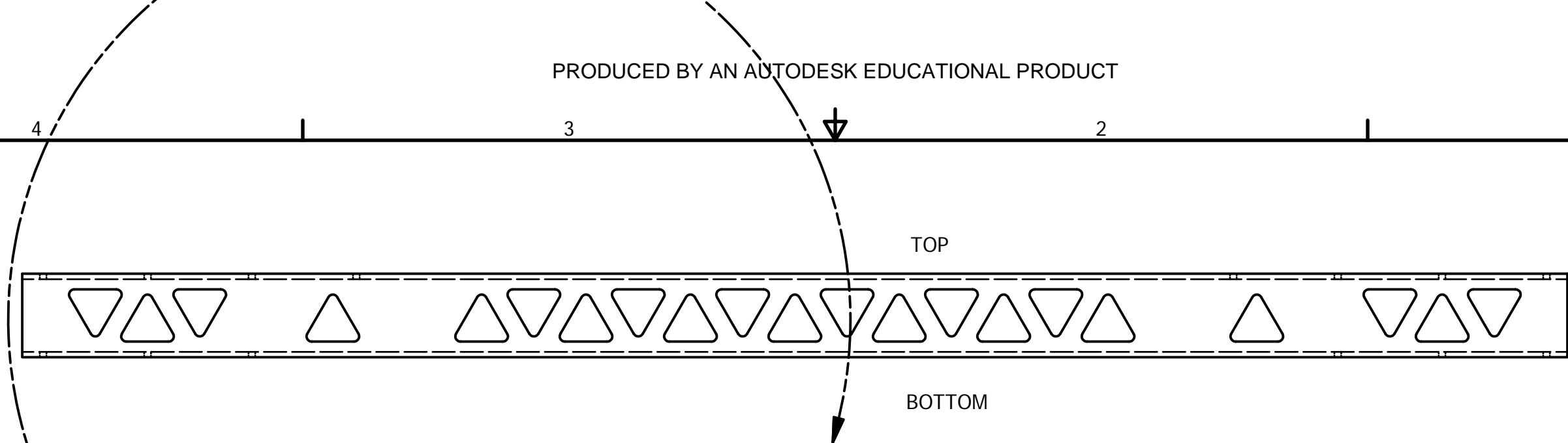
DRAWN	Dad	11/24/2009	TITLE CHASSIS FRAME WELDMENT 1x req'd - dwg 3 of 3		
CHECKED					
QA					
MFG					
APPROVED			SIZE B	DWG NO frame weldment 6	REV
			SCALE 1 / 4	SHEET 3 OF 16	

PRODUCED BY AN AUTODESK EDUCATIONAL PRODUCT

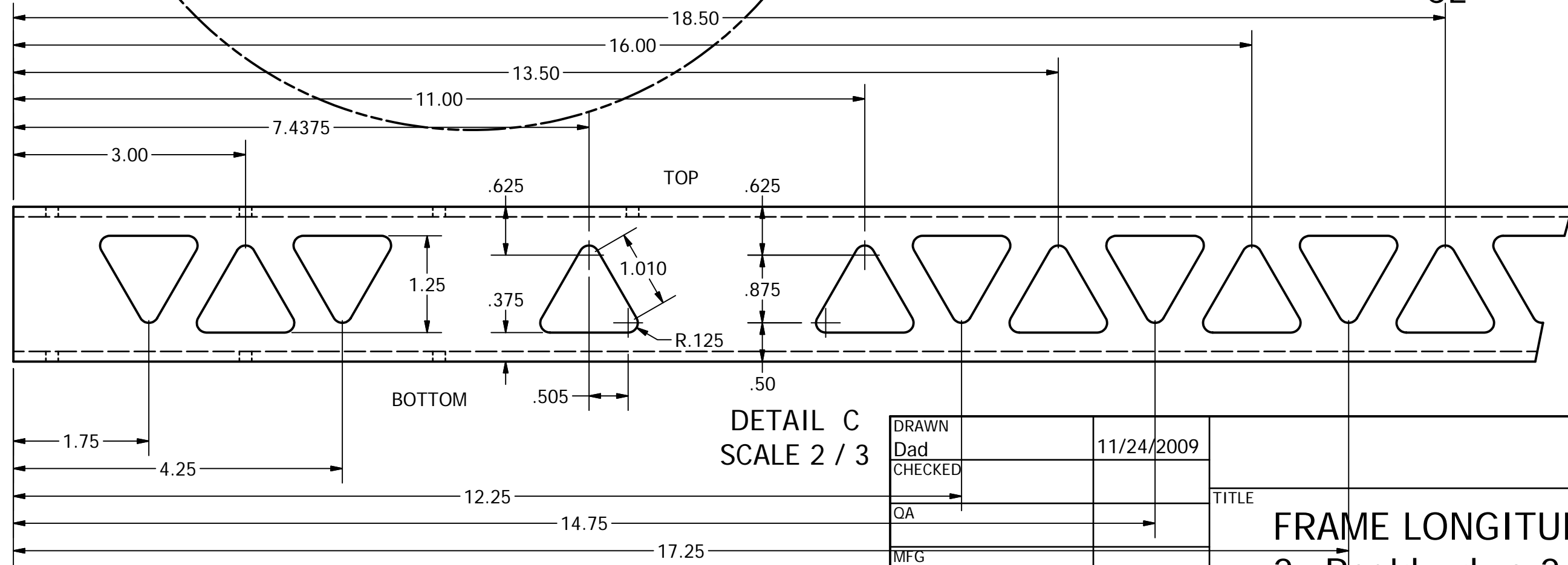
PRODUCED BY AN AUTODESK EDUCATIONAL PRODUCT



DRAWN Dad	11/24/2009	TITLE FRAME LONGITUDINAL 2x Req'd - dwg 1 of 2		
CHECKED				
QA				
MFG				
APPROVED		SIZE B	DWG NO frame weldment 6	REV
		SCALE 1 / 3	SHEET 4 OF 16	



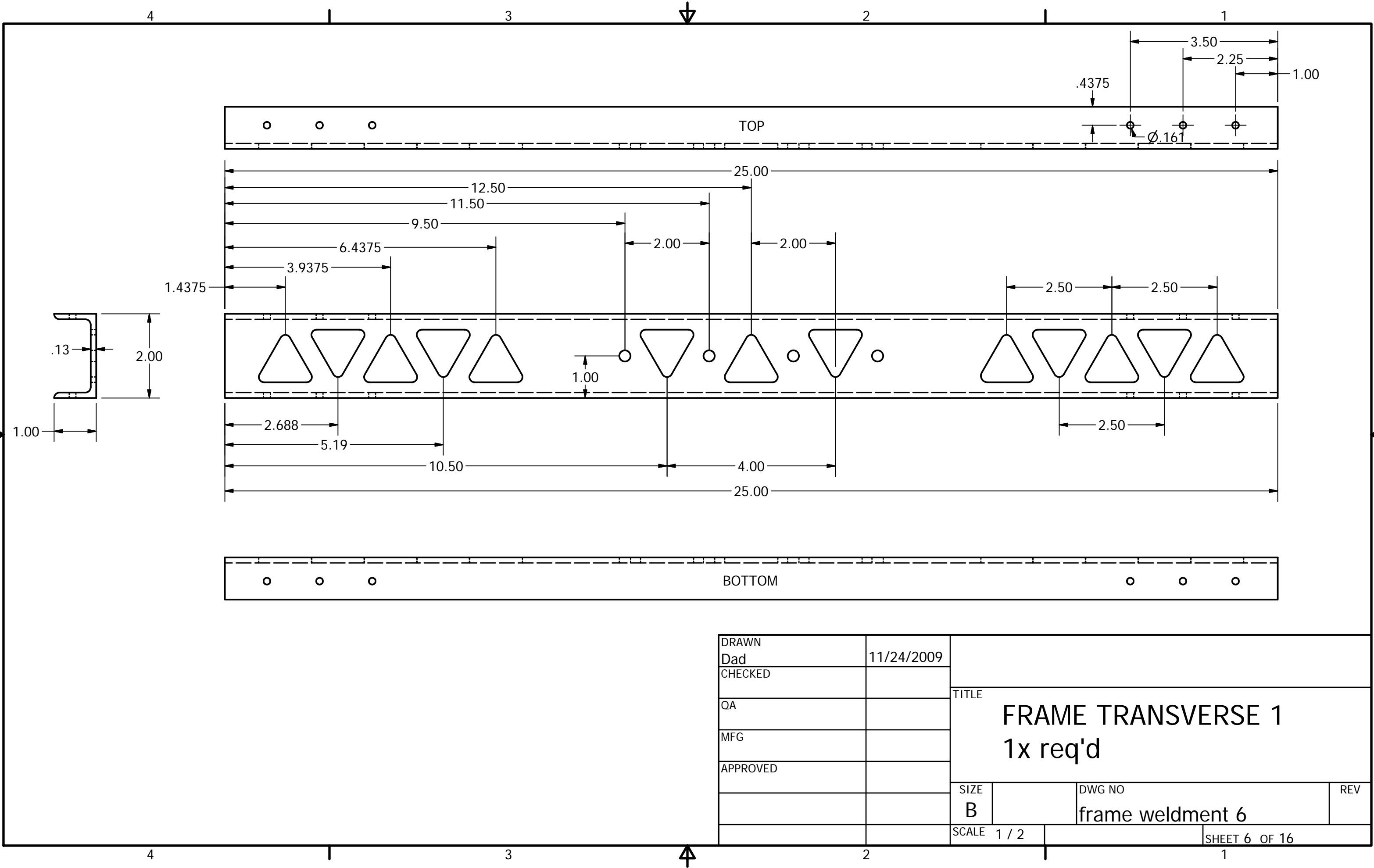
CL
Piece is symmetric about CL
CL

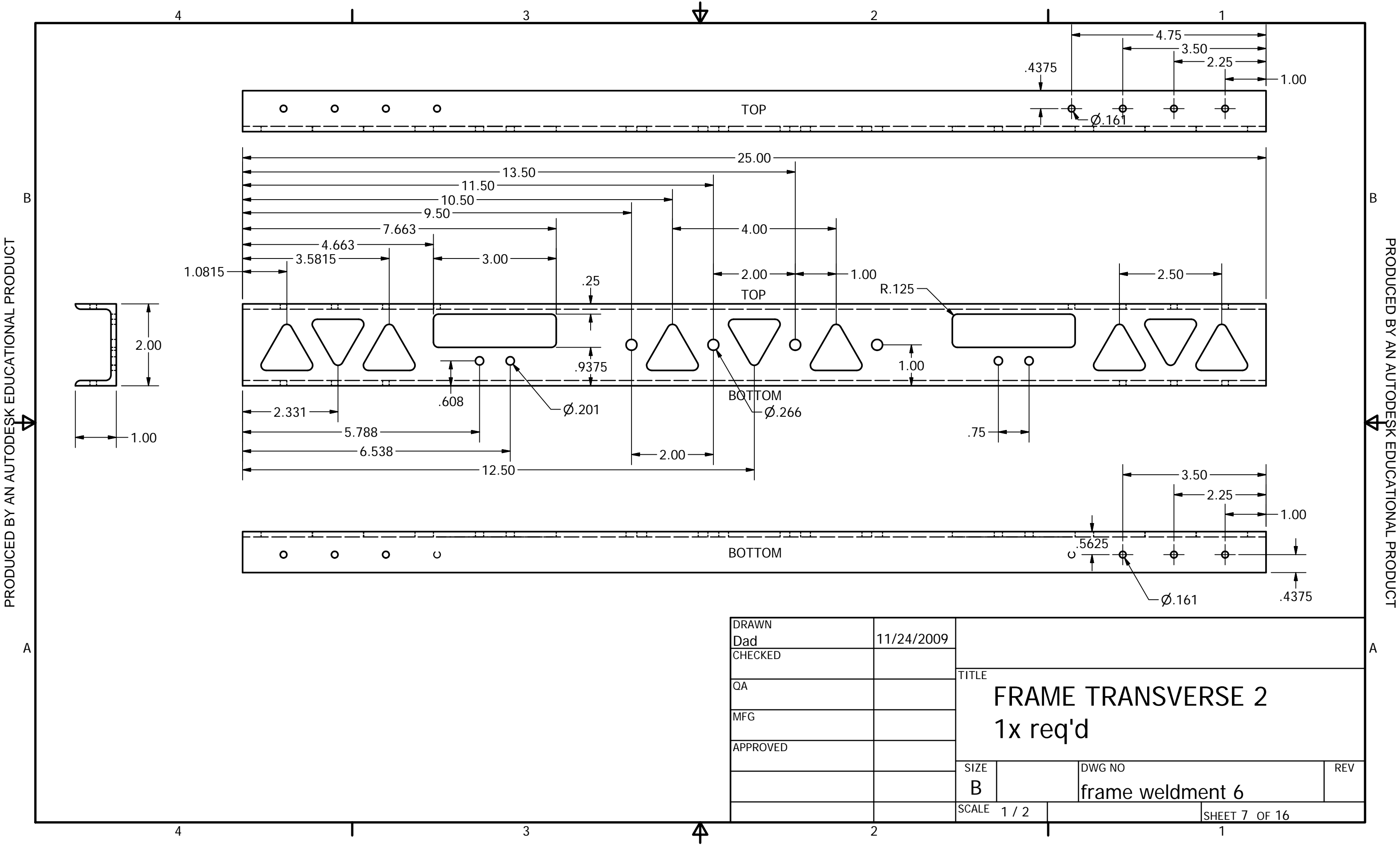


DRAWN	Dad	11/24/2009	TITLE		
CHECKED					
QA			FRAME LONGITUDINAL 2x Req'd - dwg 2 of 2		
MFG					
APPROVED			SIZE	DWG NO	REV
			B	frame weldment 6	
			SCALE 1 / 3	SHEET 5 OF 16	

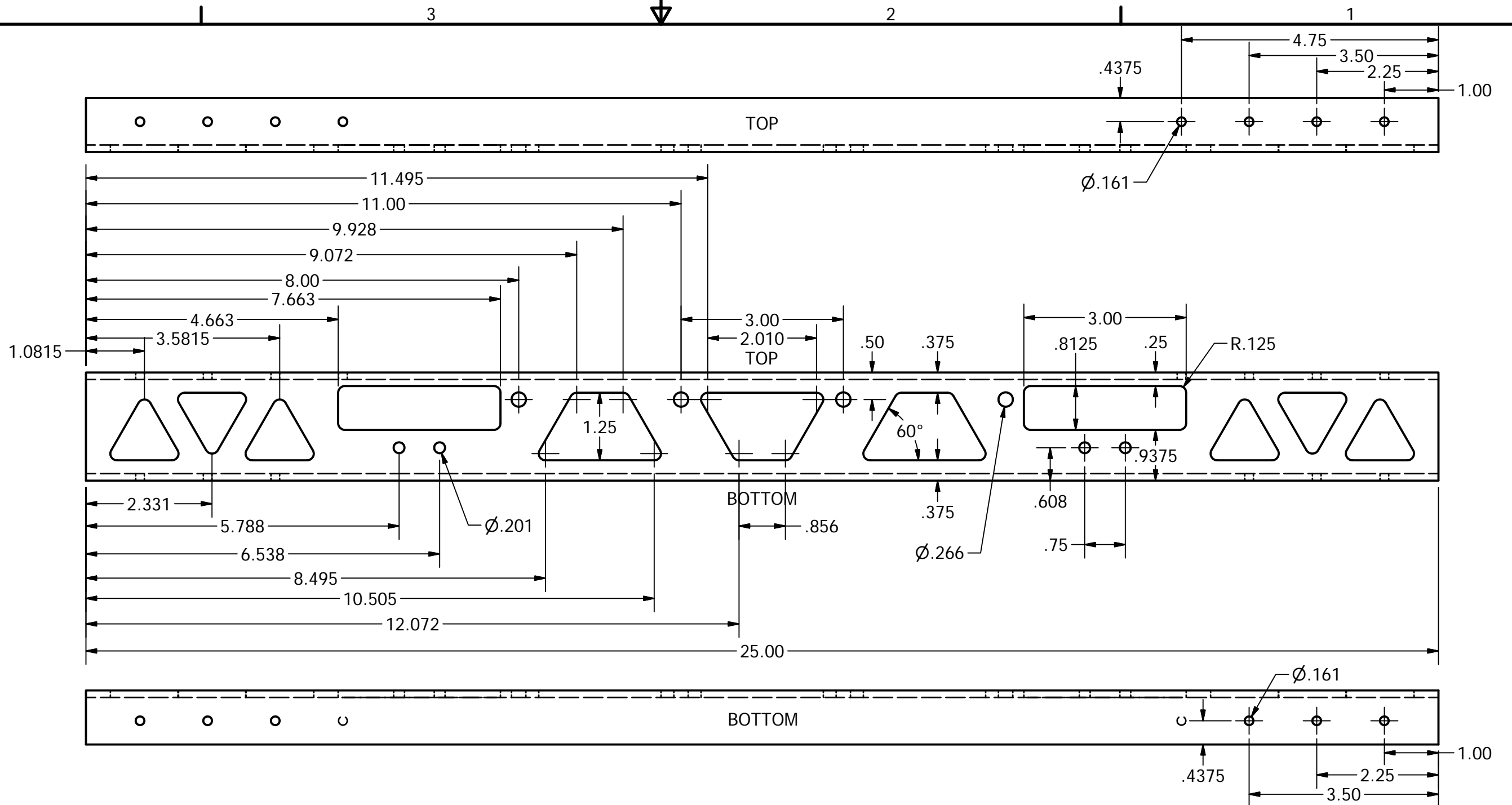
PRODUCED BY AN AUTODESK EDUCATIONAL PRODUCT

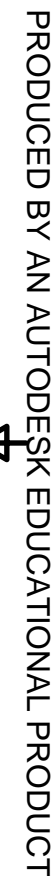
PRODUCED BY AN AUTODESK EDUCATIONAL PRODUCT





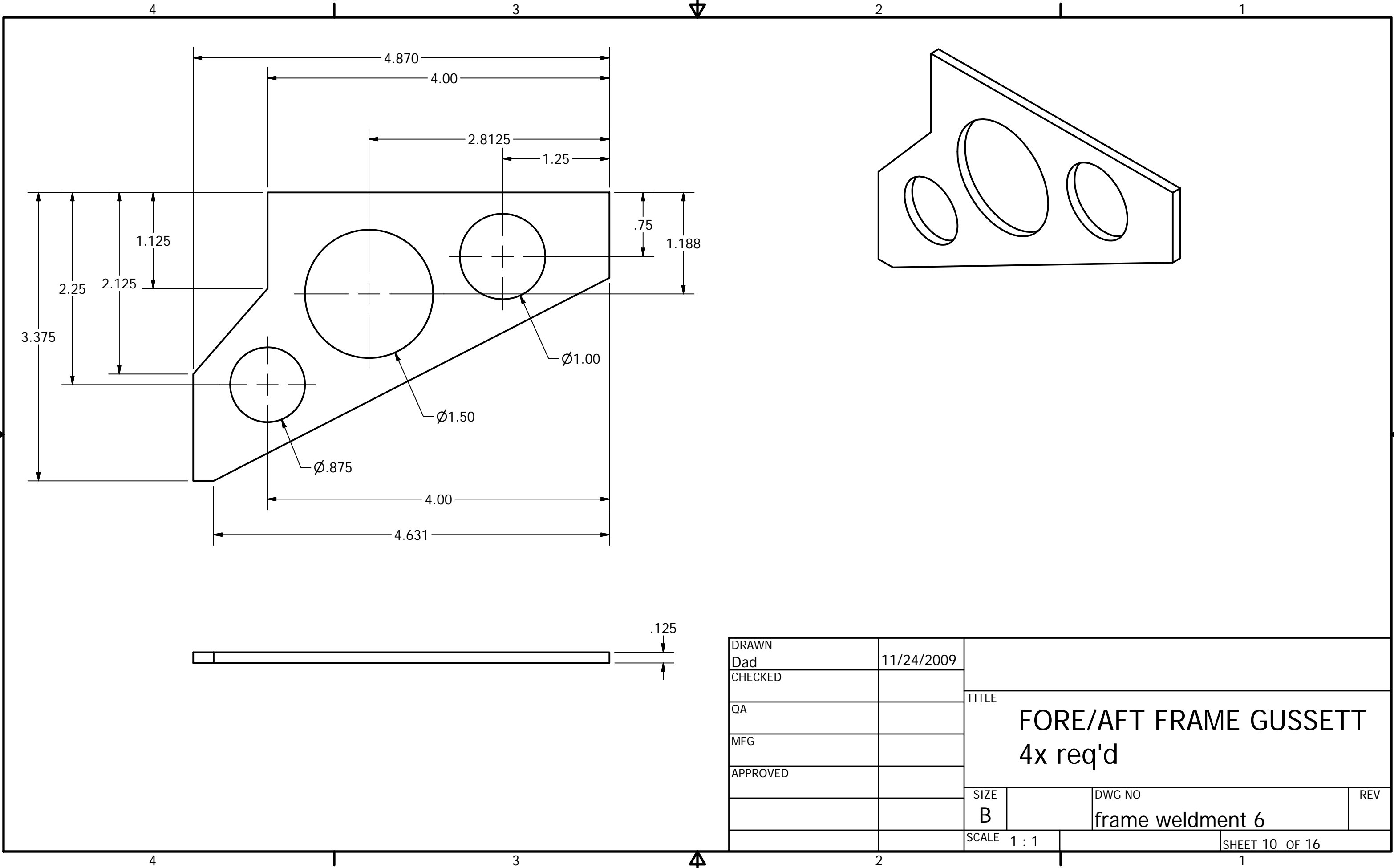
DRAWN	Dad	11/24/2009	FRAME TRANSVERSE 2 1x req'd		
CHECKED					
QA					
MFG					
APPROVED					
			SIZE	DWG NO	REV
			B	frame weldment 6	
			SCALE	1 / 2	SHEET 7 OF 16



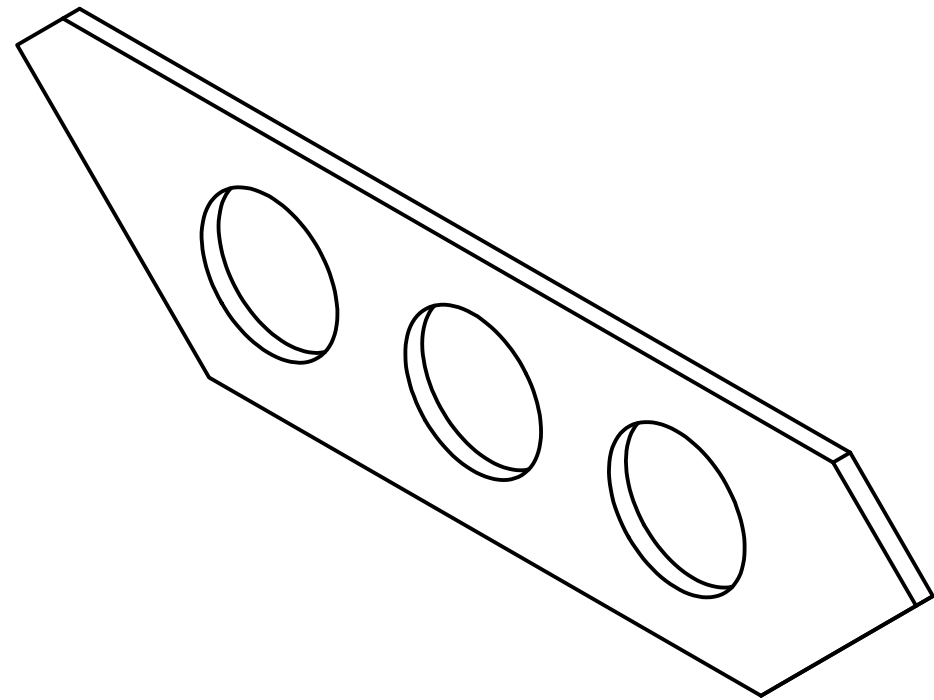


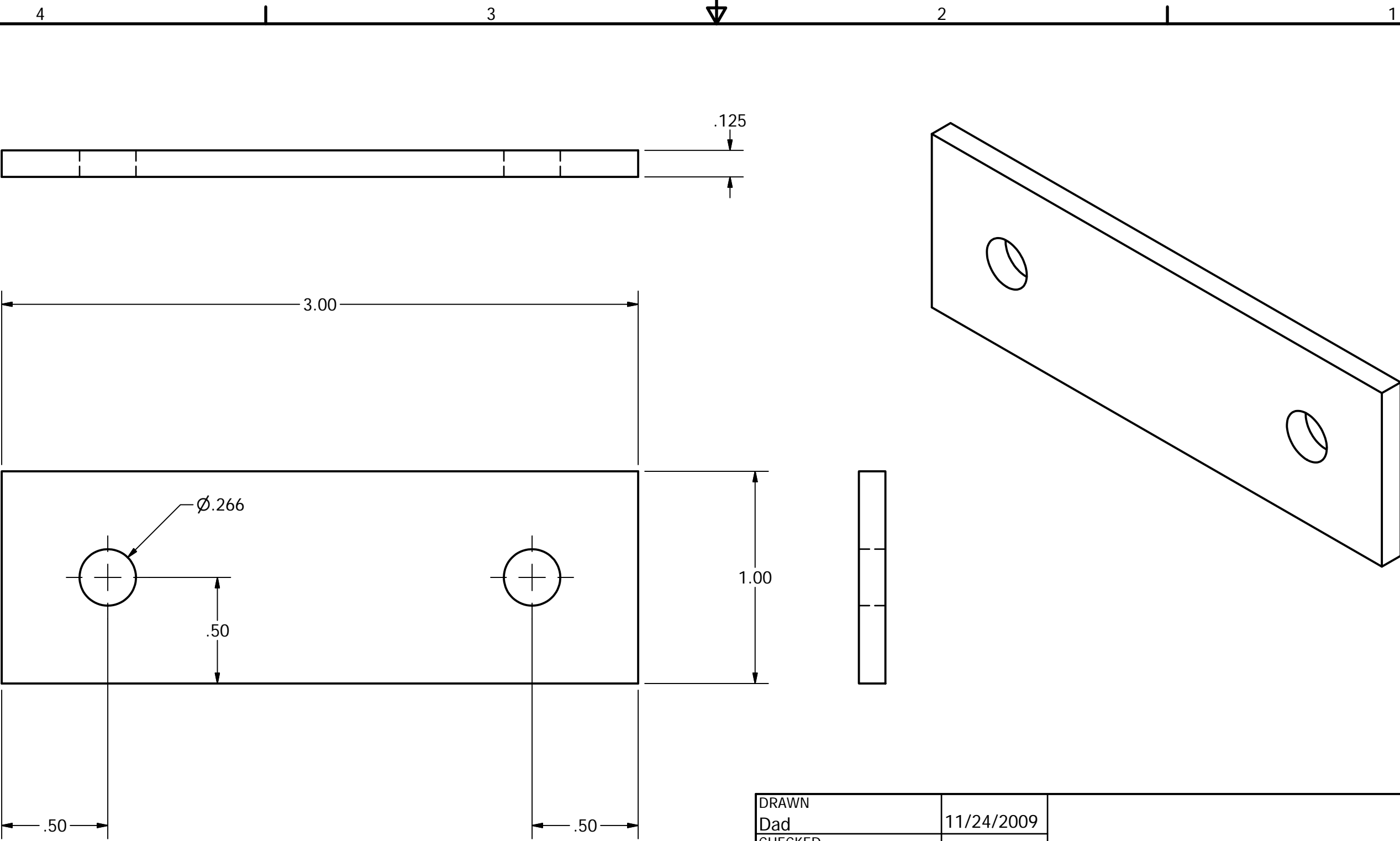
PRODUCED BY AN AUTODESK EDUCATIONAL PRODUCT

PRODUCED BY AN AUTODESK EDUCATIONAL PRODUCT



DRAWN	Dad	11/24/2009	TITLE FORE/AFT FRAME GUSSETT 4x req'd		
CHECKED					
QA					
MFG					
APPROVED			SIZE B	DWG NO frame weldment 6	REV
			SCALE 1 : 1	SHEET 10 OF 16	

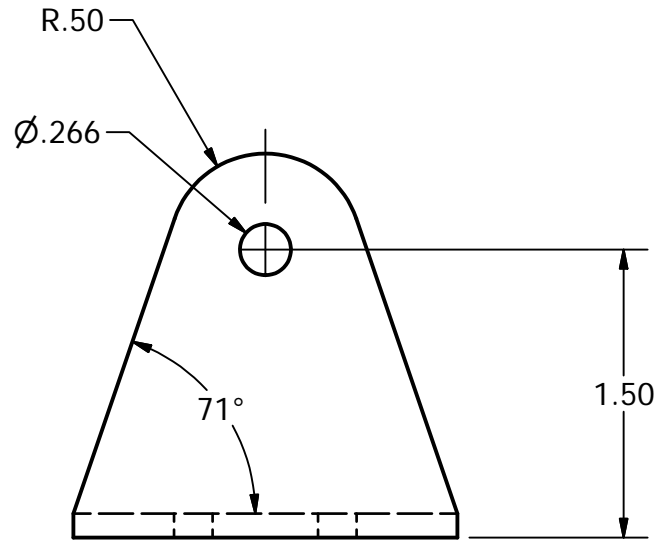
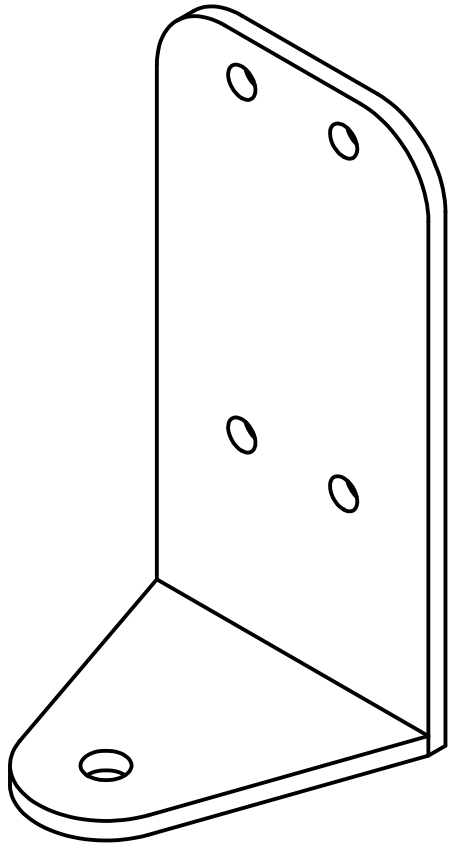
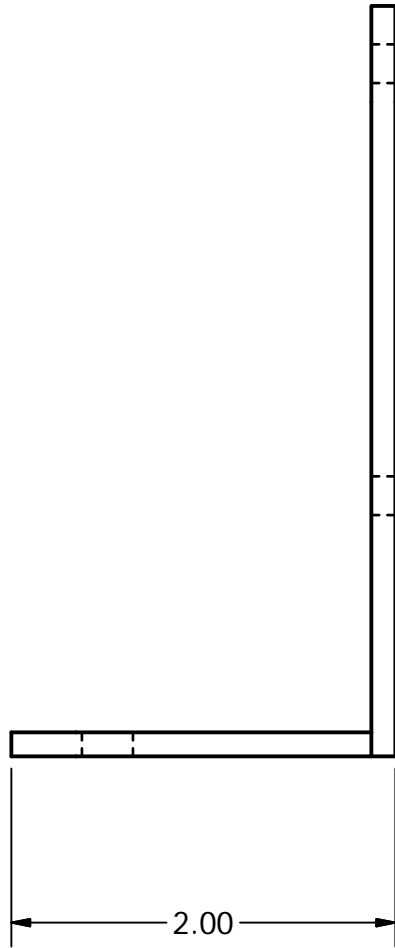
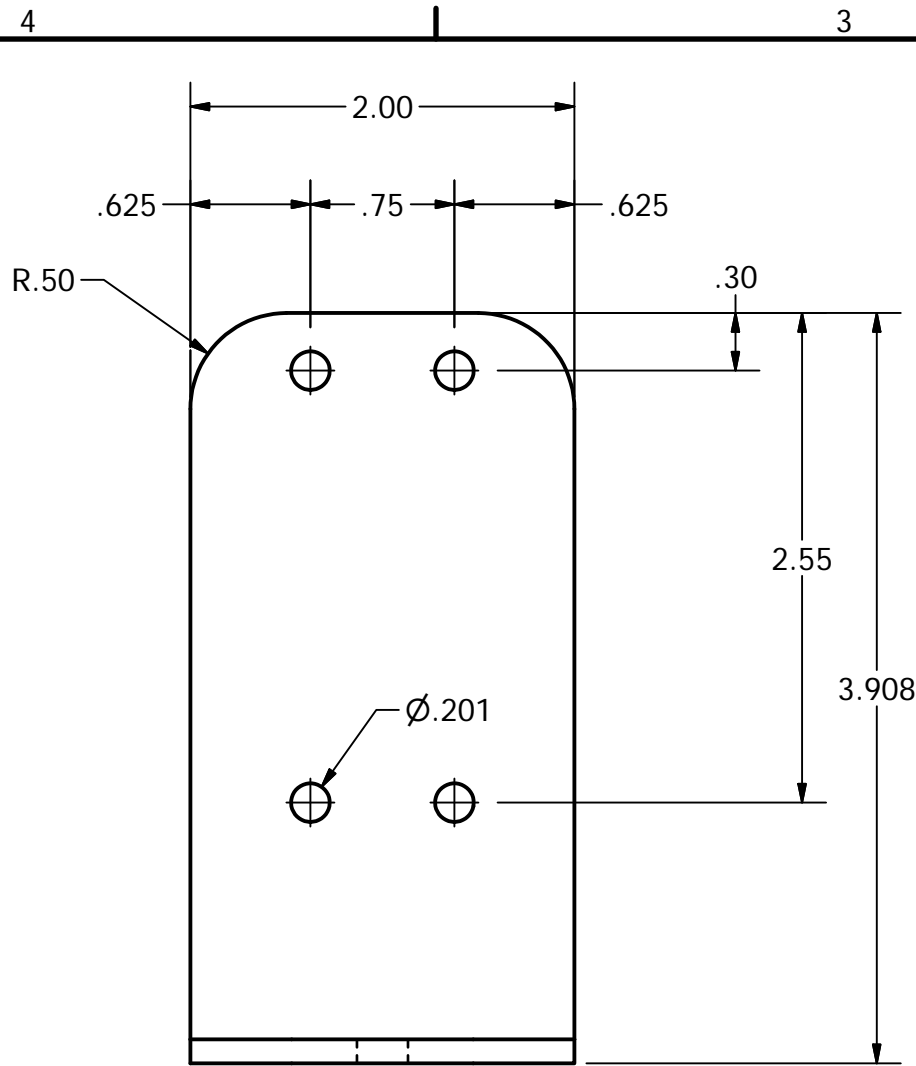




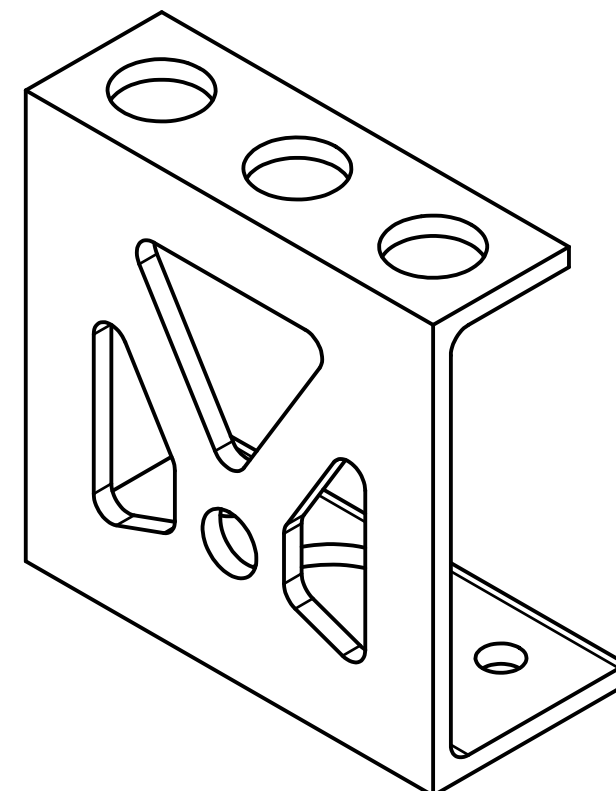
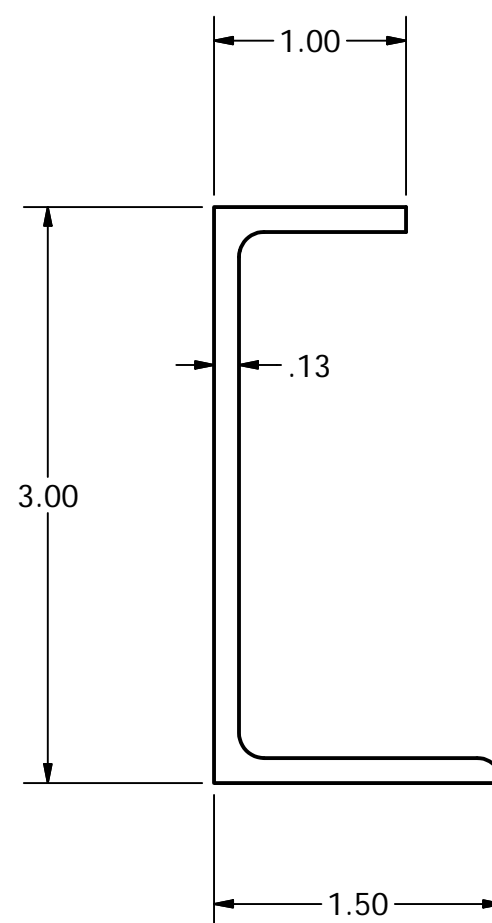
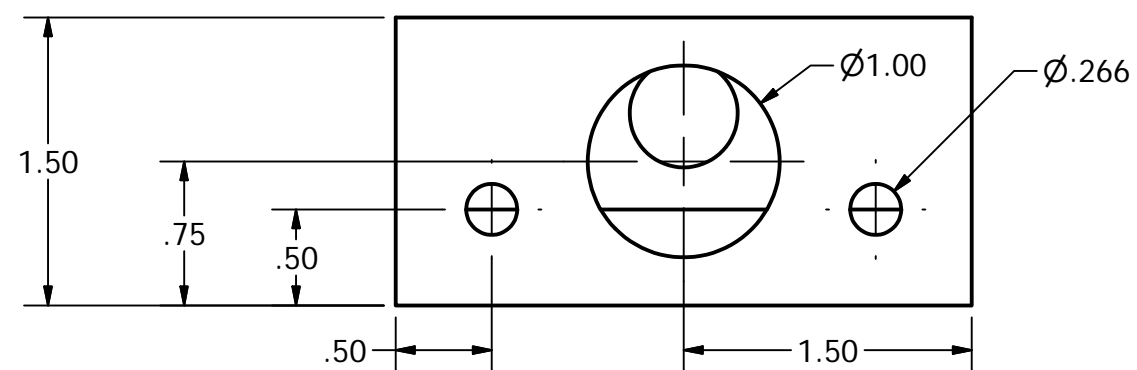
DRAWN	11/24/2009	TITLE SIDE GUSSETT BASE 4x req'd		
Dad				
CHECKED				
QA				
MFG		SIZE B		
APPROVED				
		DWG NO	REV	
		frame weldment 6		
		SCALE 2 : 1	SHEET 12 OF 16	

PRODUCED BY AN AUTODESK EDUCATIONAL PRODUCT

PRODUCED BY AN AUTODESK EDUCATIONAL PRODUCT



DRAWN	Dad	11/24/2009	TITLE BAINBOTS MOUNT 4 req'd		
CHECKED					
QA					
MFG					
APPROVED			SIZE B	DWG NO frame weldment 6	REV
			SCALE 1 : 1	SHEET 13 OF 16	



DRAWN Dad	11/24/2009	<div>TITLE</div> <div>BUMPER MOUNT SIDE</div> <div>4x req'd</div>			
CHECKED					
QA					
MFG					
APPROVED					
		SIZE B		DWG NO frame weldment 6	REV
		SCALE 1 : 1		SHEET 14 OF 16	

PRODUCED BY AN AUTODESK EDUCATIONAL PRODUCT

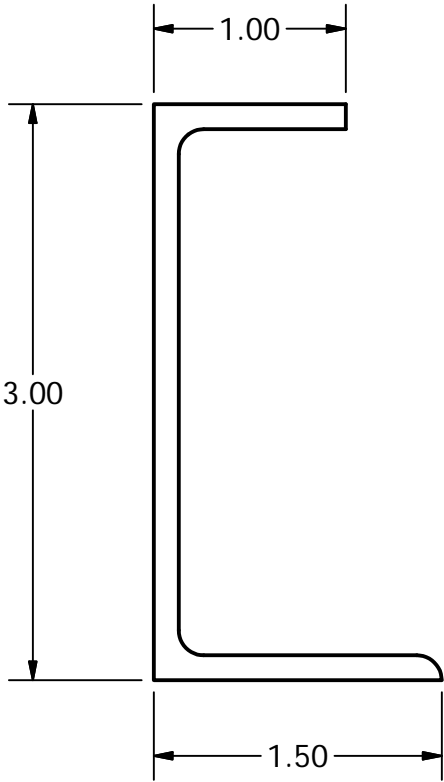
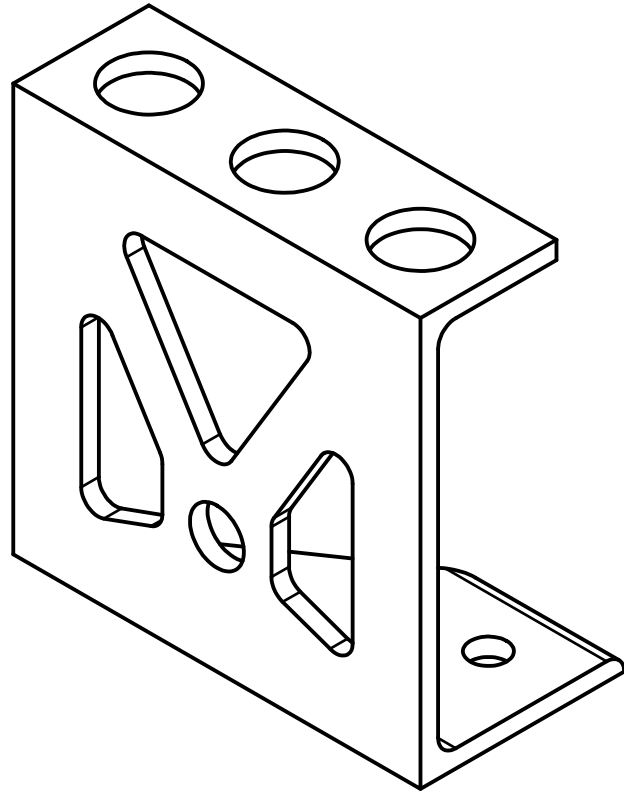
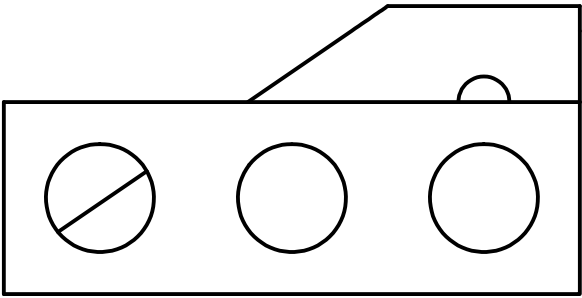
PRODUCED BY AN AUTODESK EDUCATIONAL PRODUCT

A

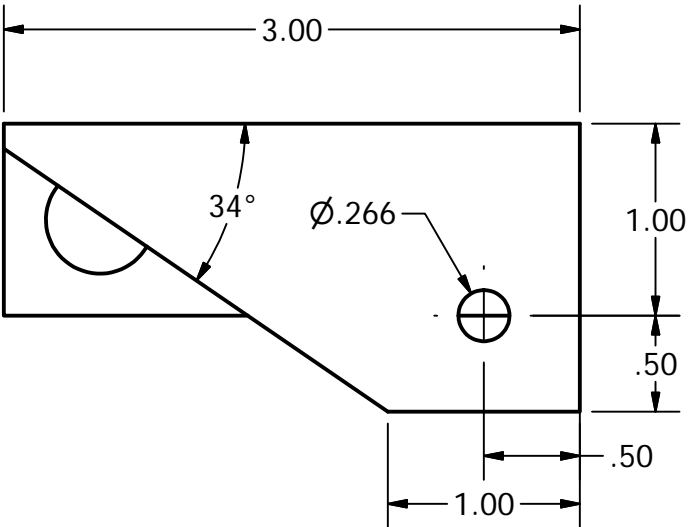
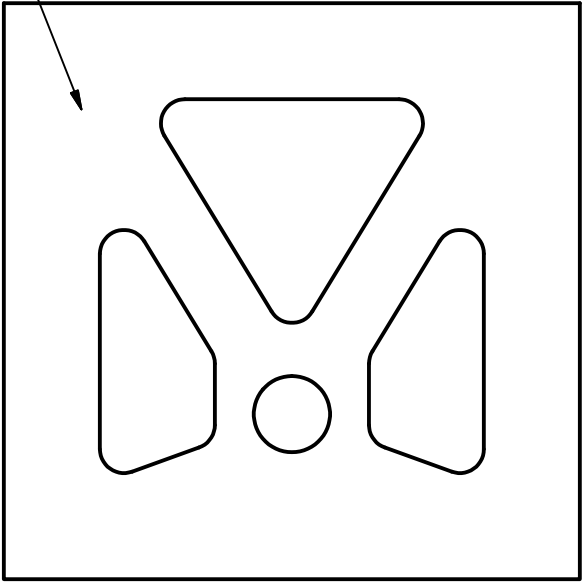
A

B

B



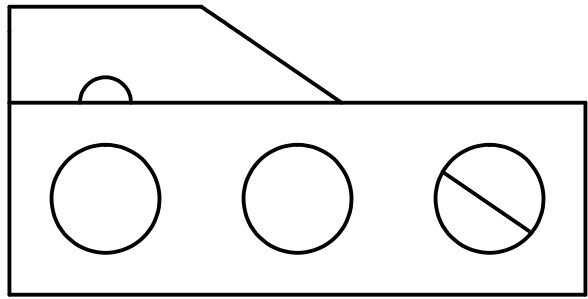
SAME CUT PATTERN
FRONT & TOP AS
BUMPER MOUNT SIDE



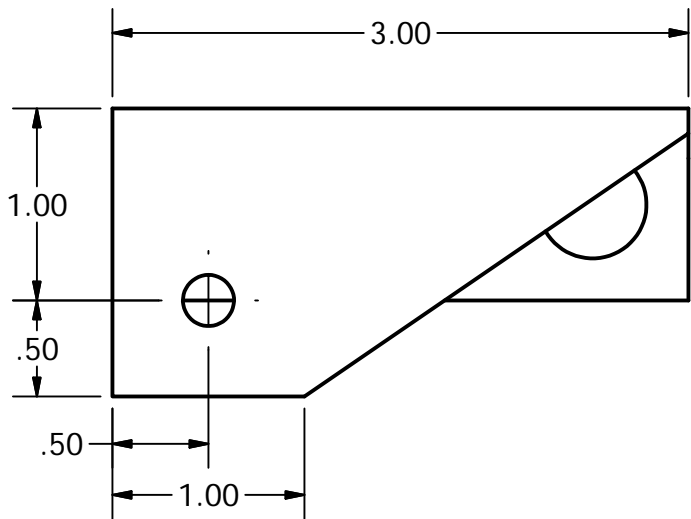
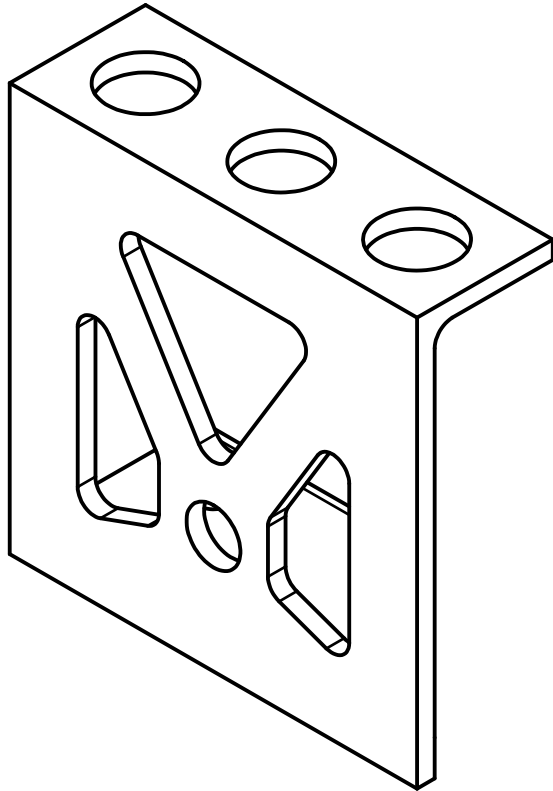
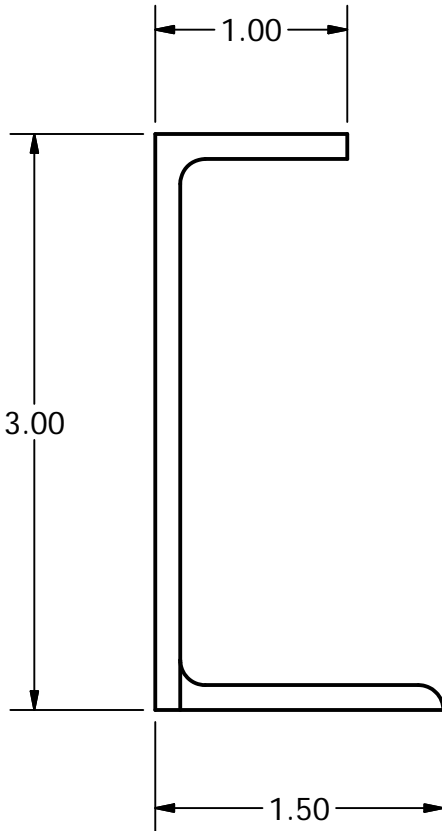
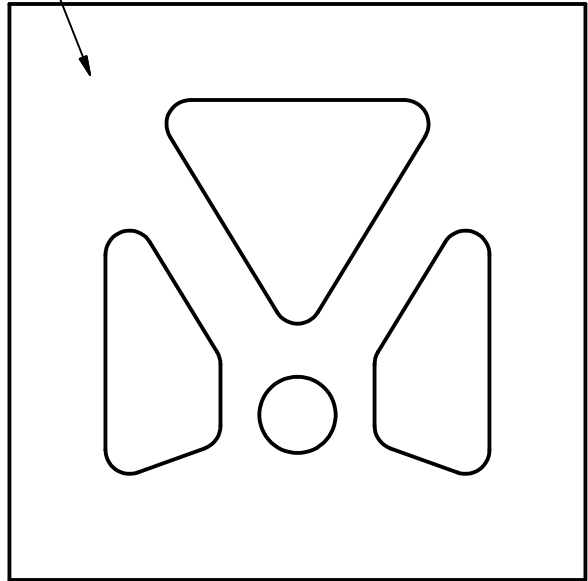
DRAWN Dad	11/24/2009	TITLE BUMPER MOUNT L 2x req'd		
CHECKED				
QA				
MFG				
APPROVED		SIZE B	DWG NO frame weldment 6	REV
		SCALE 1 : 1	SHEET 15 OF 16	

PRODUCED BY AN AUTODESK EDUCATIONAL PRODUCT

PRODUCED BY AN AUTODESK EDUCATIONAL PRODUCT



SAME CUT PATTERN
FRONT & TOP AS
BUMPER MOUNT SIDE



DRAWN	Dad	11/24/2009	TITLE BUMPER MOUNT R 2x req'd		
CHECKED					
QA					
MFG					
APPROVED			SIZE B	DWG NO frame weldment 6	REV
			SCALE 1 : 1	SHEET 16 OF 16	