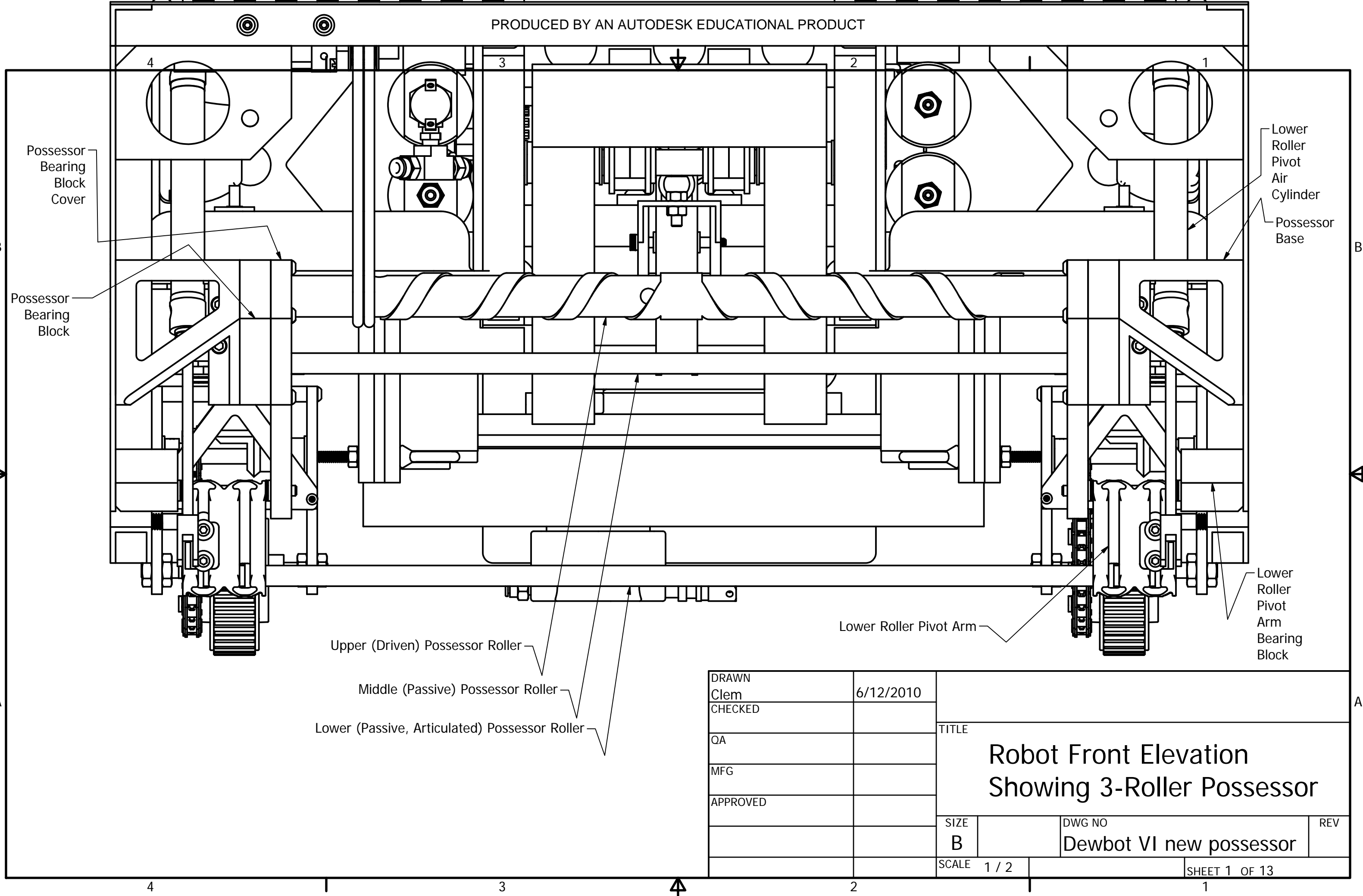


PRODUCED BY AN AUTODESK EDUCATIONAL PRODUCT

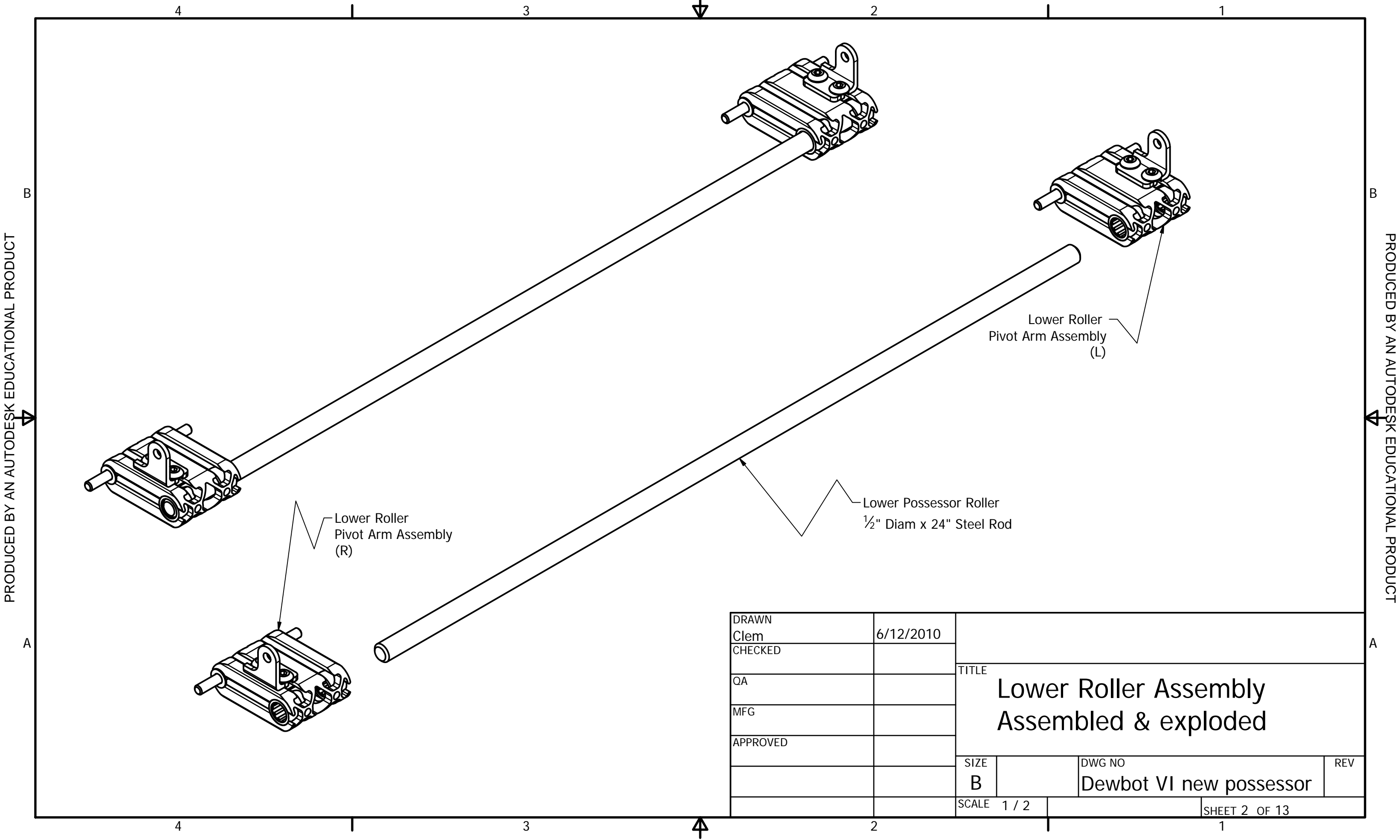
PRODUCED BY AN AUTODESK EDUCATIONAL PRODUCT

PRODUCED BY AN AUTODESK EDUCATIONAL PRODUCT



DRAWN Clem	6/12/2010	TITLE Robot Front Elevation Showing 3-Roller Possessor		
CHECKED				
QA				
MFG				
APPROVED		SIZE B	DWG NO Dewbot VI new possessor	REV
		SCALE 1 / 2	SHEET 1 OF 13	

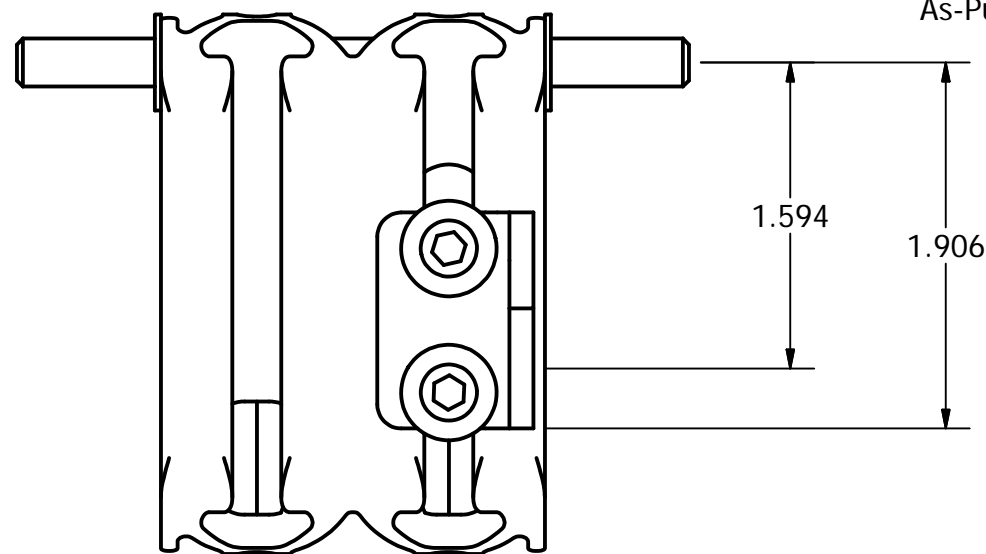
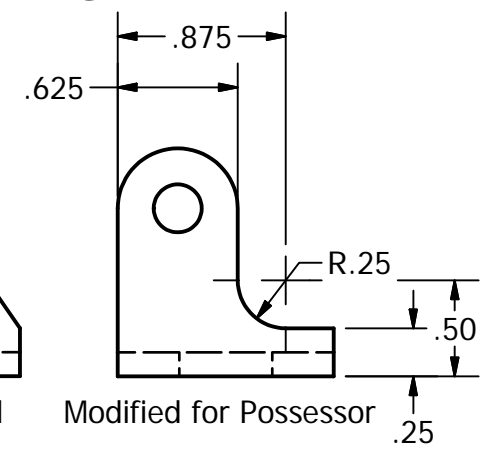
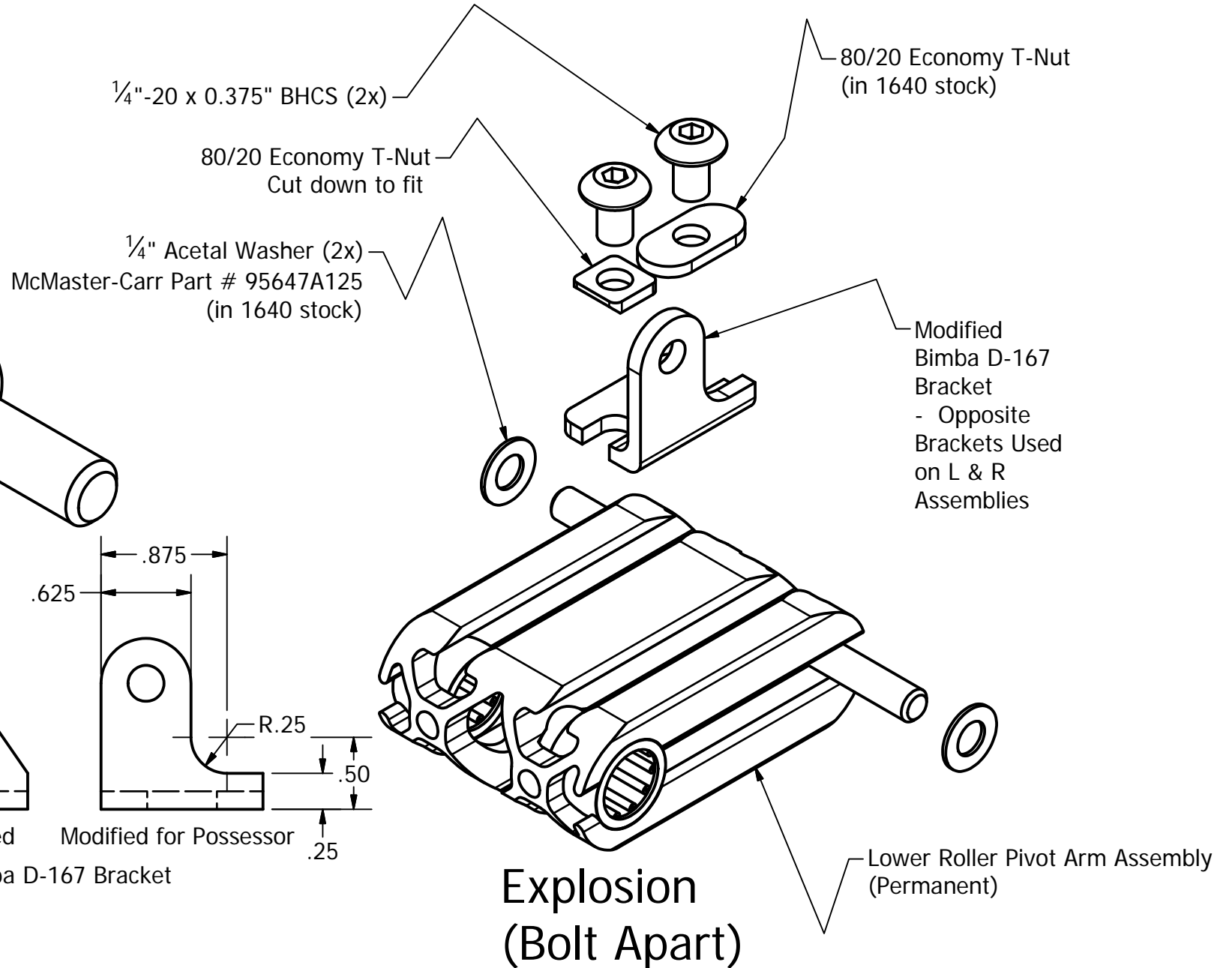
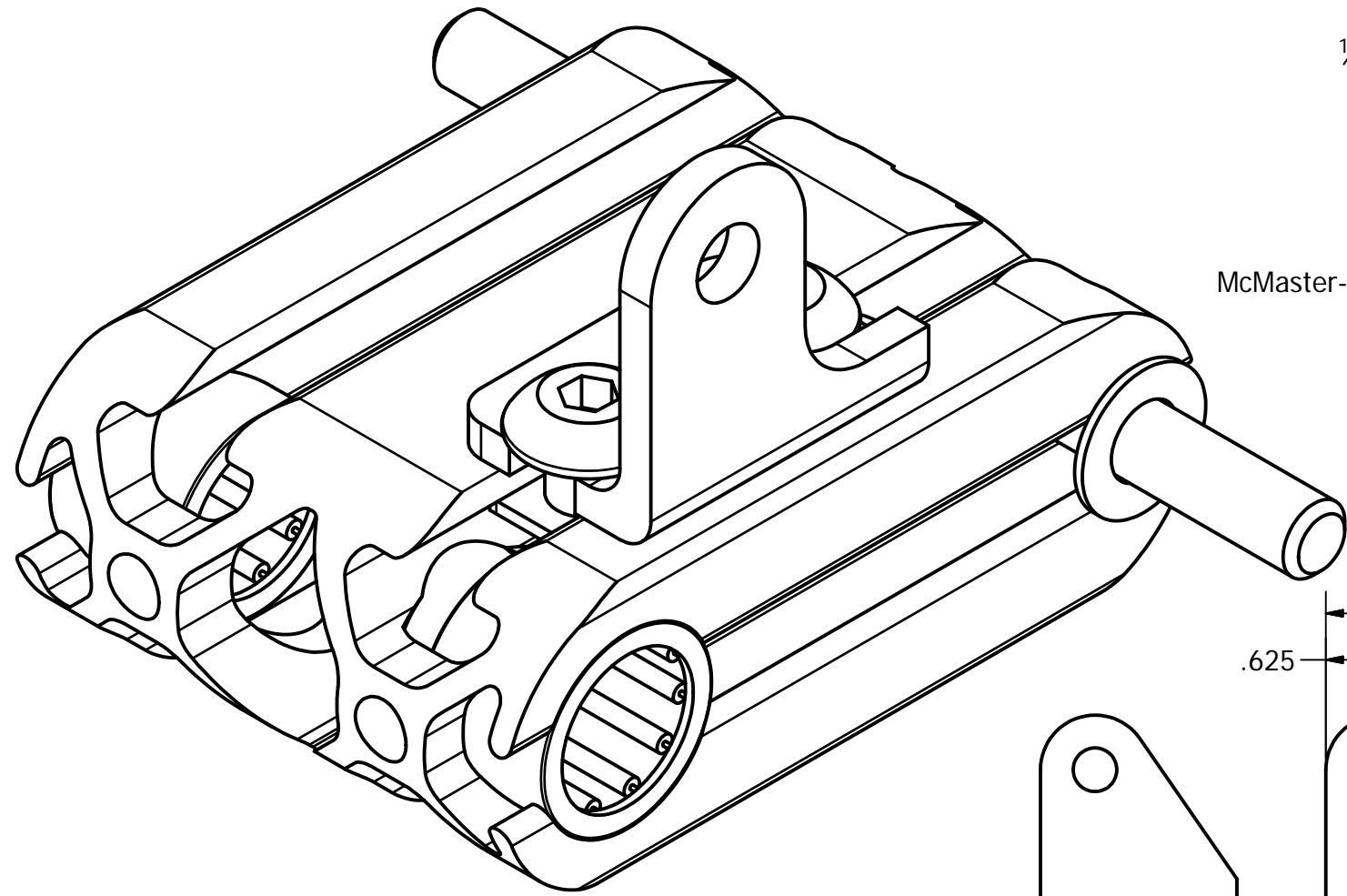
PRODUCED BY AN AUTODESK EDUCATIONAL PRODUCT



PRODUCED BY AN AUTODESK EDUCATIONAL PRODUCT

PRODUCED BY AN AUTODESK EDUCATIONAL PRODUCT

DRAWN Clem	6/12/2010	TITLE Lower Roller Assembly Assembled & exploded		
CHECKED				
QA				
MFG				
APPROVED		SIZE B	DWG NO Dewbot VI new possessor	REV
		SCALE 1 / 2	SHEET 2 OF 13	

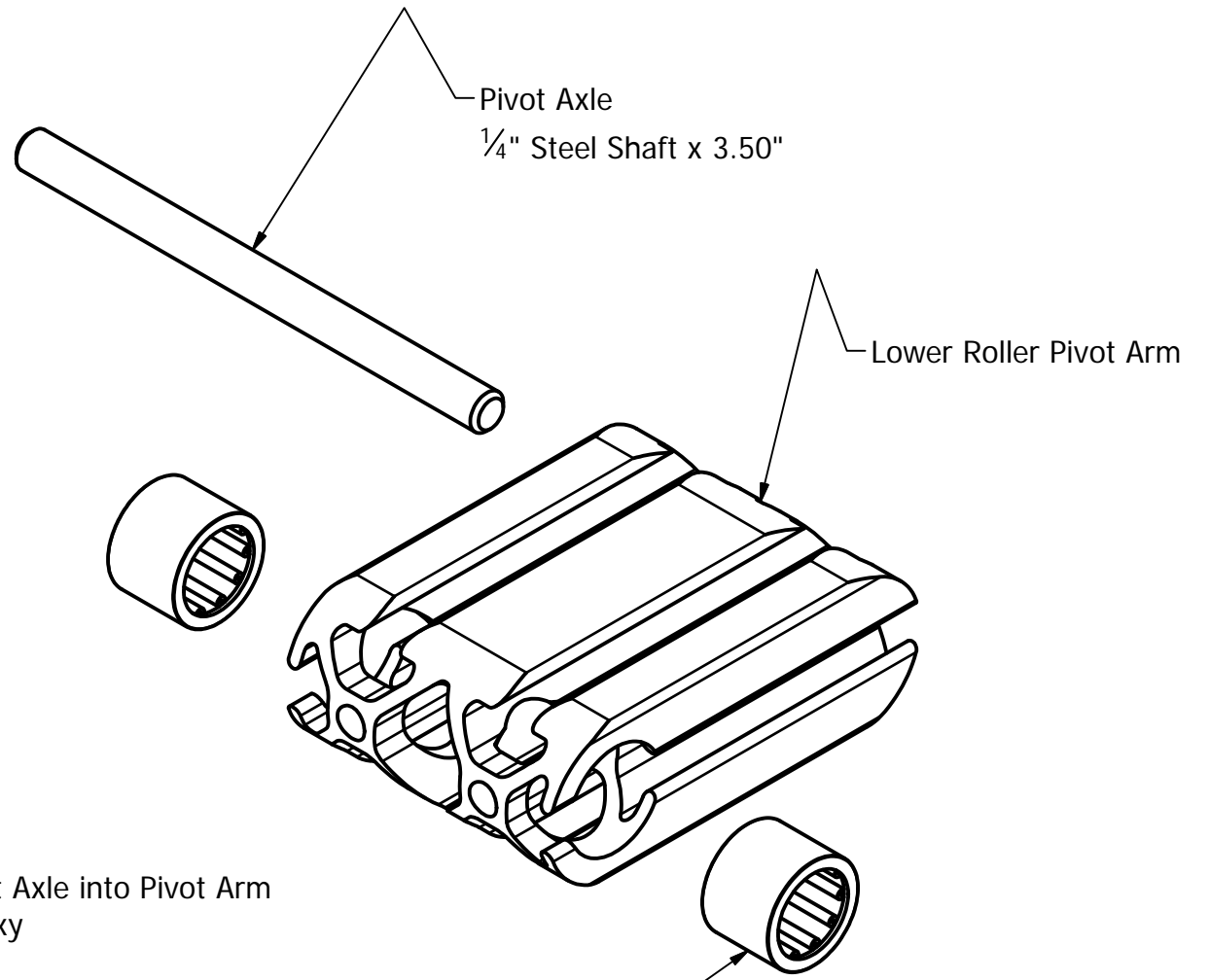
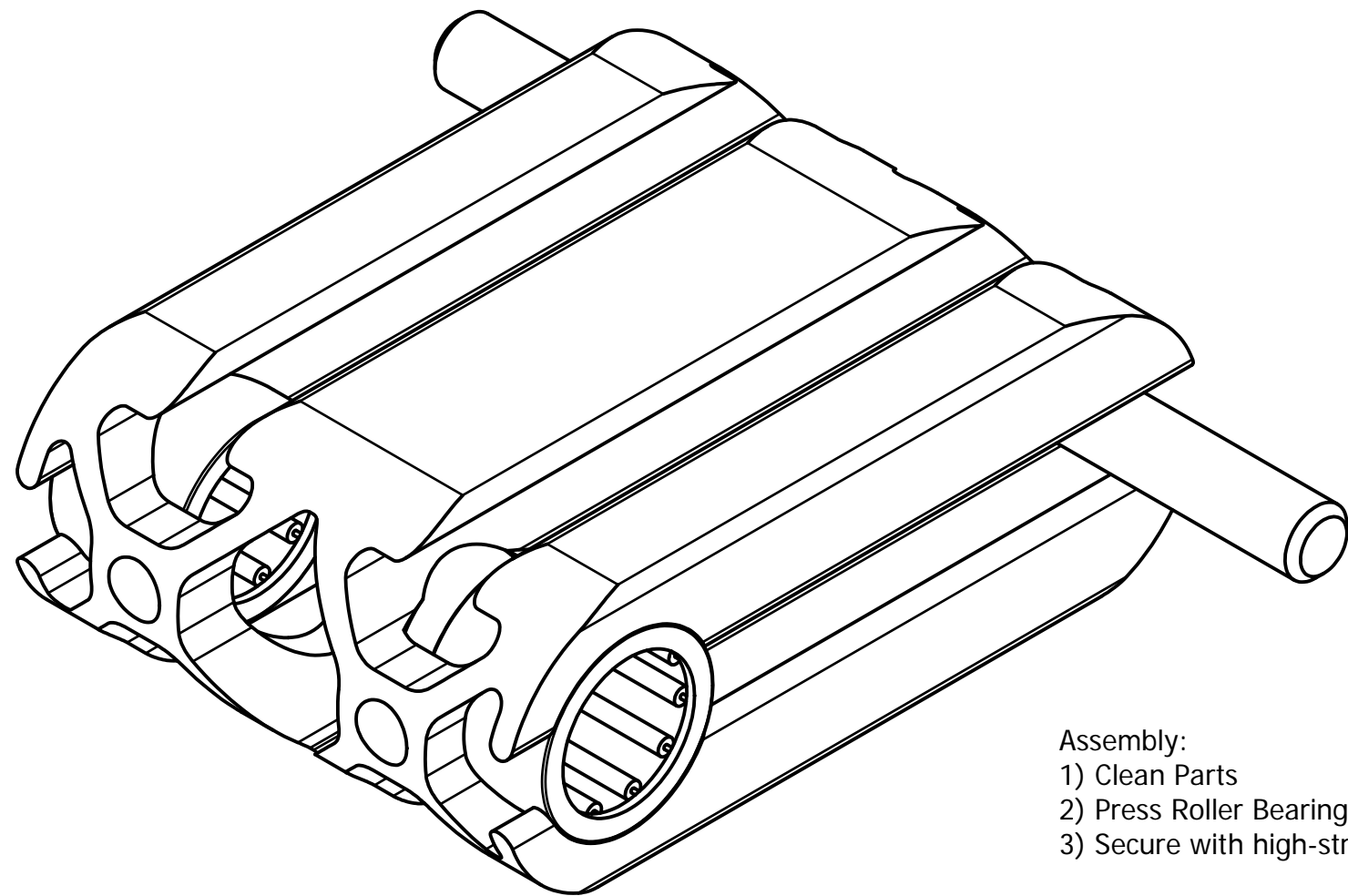


Mounting Position of Modified Bimba D-167 Bracket

DRAWN Clem	6/12/2010	TITLE Lower Roller Pivot Arm Assembly (1 of 2 - Left Shown)		
CHECKED				
QA				
MFG				
APPROVED		SIZE B	DWG NO Dewbot VI new possessor	REV
		SCALE	SHEET 3 OF 13	

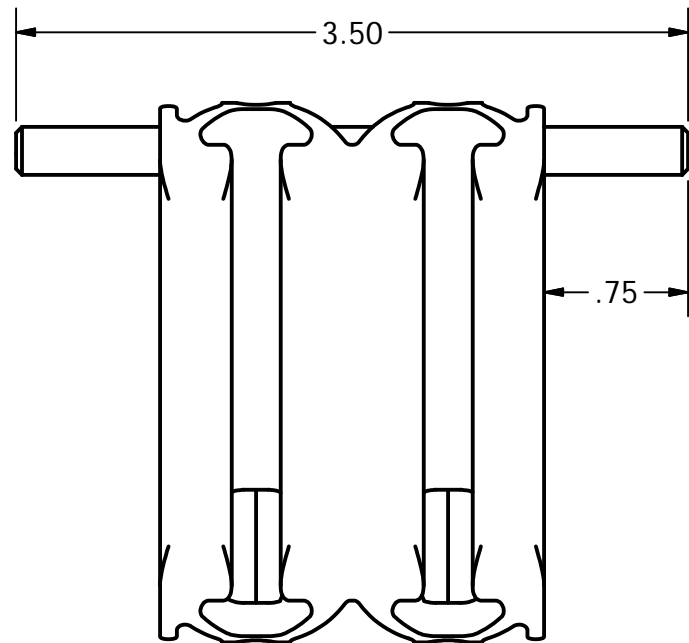
PRODUCED BY AN AUTODESK EDUCATIONAL PRODUCT

PRODUCED BY AN AUTODESK EDUCATIONAL PRODUCT



- Assembly:
- 1) Clean Parts
 - 2) Press Roller Bearings and Pivot Axle into Pivot Arm
 - 3) Secure with high-strength epoxy

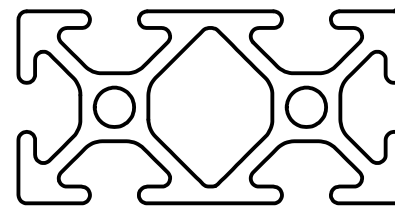
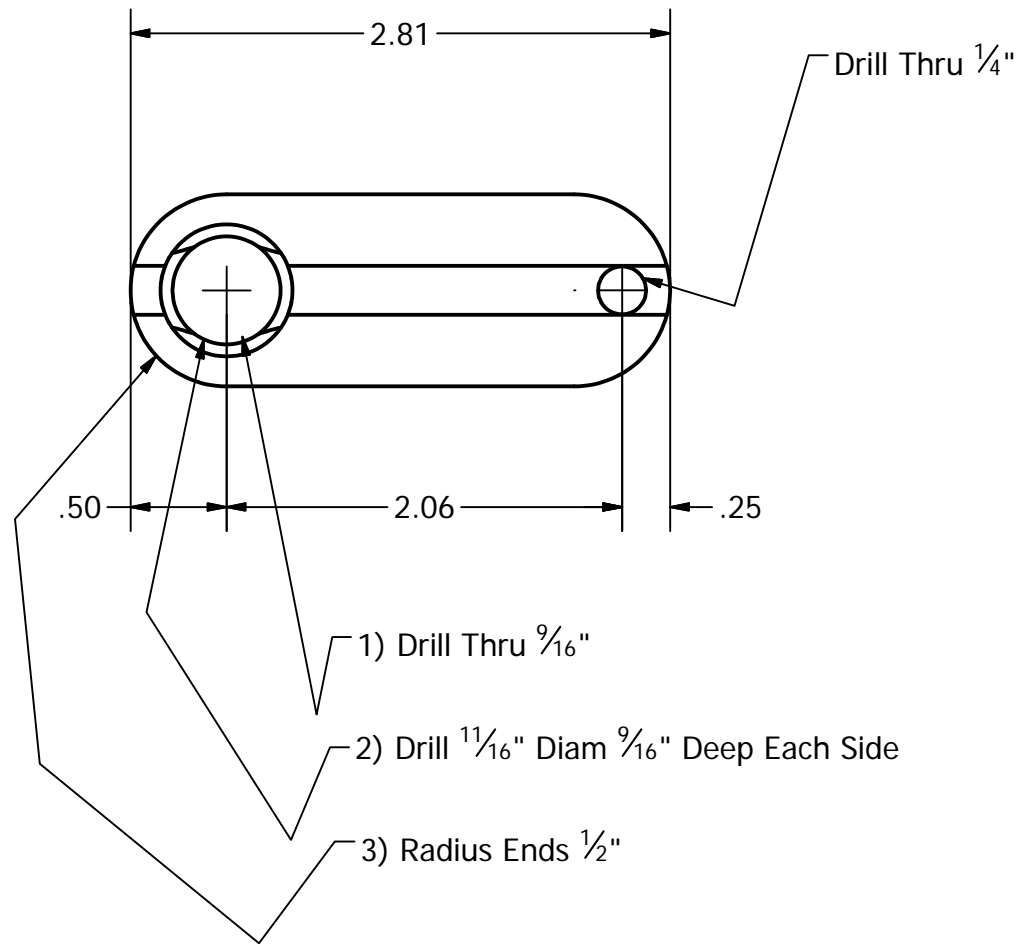
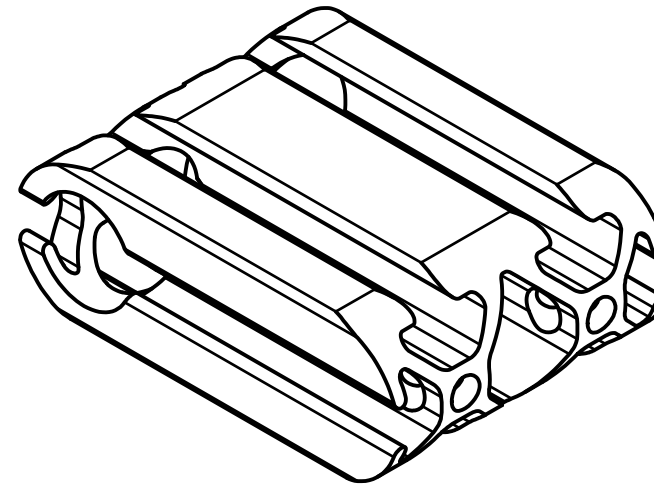
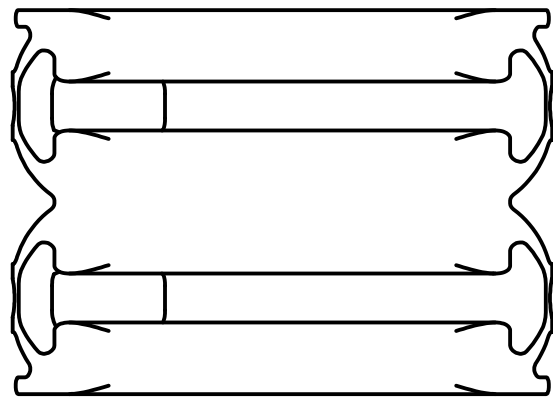
1/2" Roller Bearings (2x)
McMaster-Carr Part # 5905K23



DRAWN	Clem	6/12/2010	TITLE		
CHECKED			Lower Roller Pivot Arm Assembly (Permanent - 2x)		
QA					
MFG					
APPROVED					
			SIZE	DWG NO	REV
			B	Dewbot VI new possessor	
			SCALE	SHEET 4 OF 13	

PRODUCED BY AN AUTODESK EDUCATIONAL PRODUCT

PRODUCED BY AN AUTODESK EDUCATIONAL PRODUCT



Material:
80/20 type 1020 Aluminum Extrusion
(in 1640 stock)

Care must be taken
to drill thru straight
and normal to the surface

DRAWN Clem	6/12/2010	TITLE Lower Roller Pivot Arm (2x)		
CHECKED				
QA		SIZE B	DWG NO Dewbot VI new possessor	REV
MFG		SCALE 1 : 1		
APPROVED		SHEET 5 OF 13		

PRODUCED BY AN AUTODESK EDUCATIONAL PRODUCT

PRODUCED BY AN AUTODESK EDUCATIONAL PRODUCT

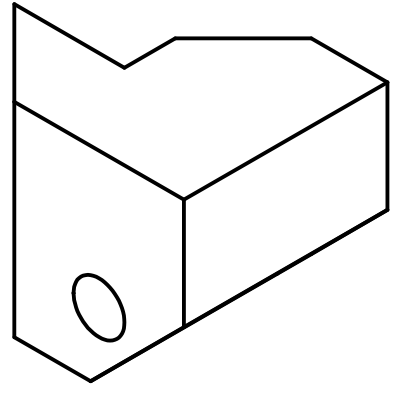
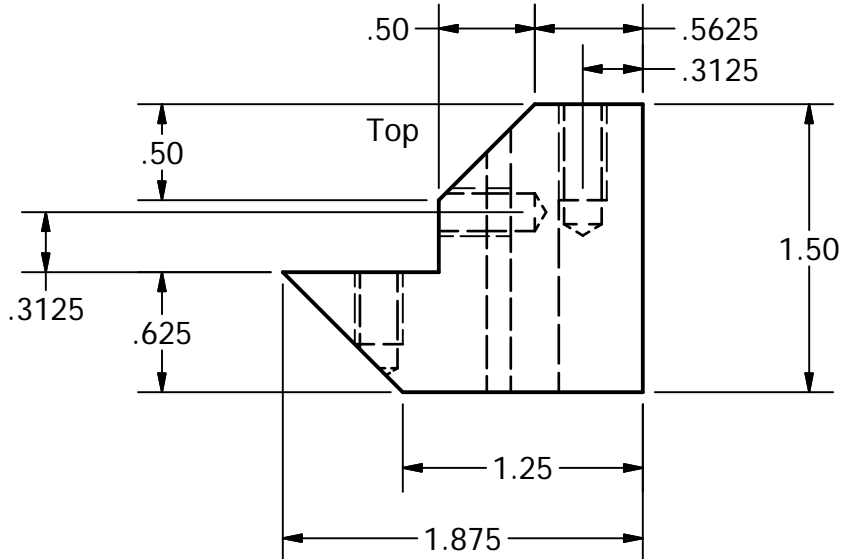
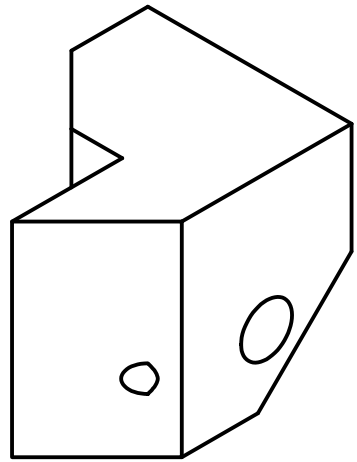
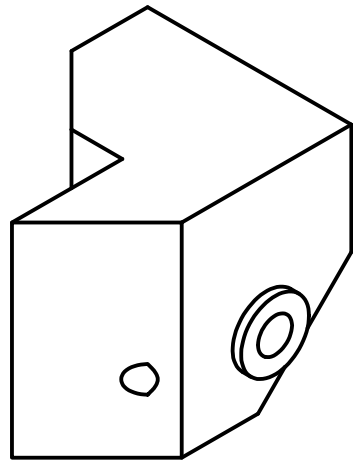
4

3

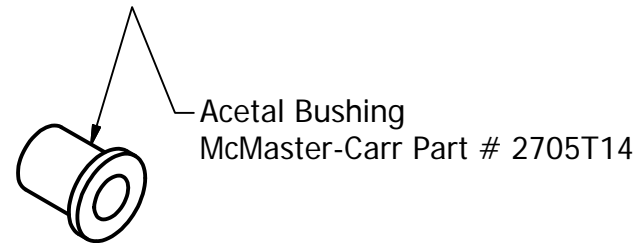
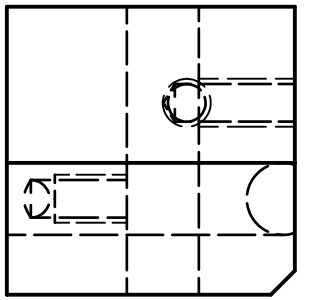
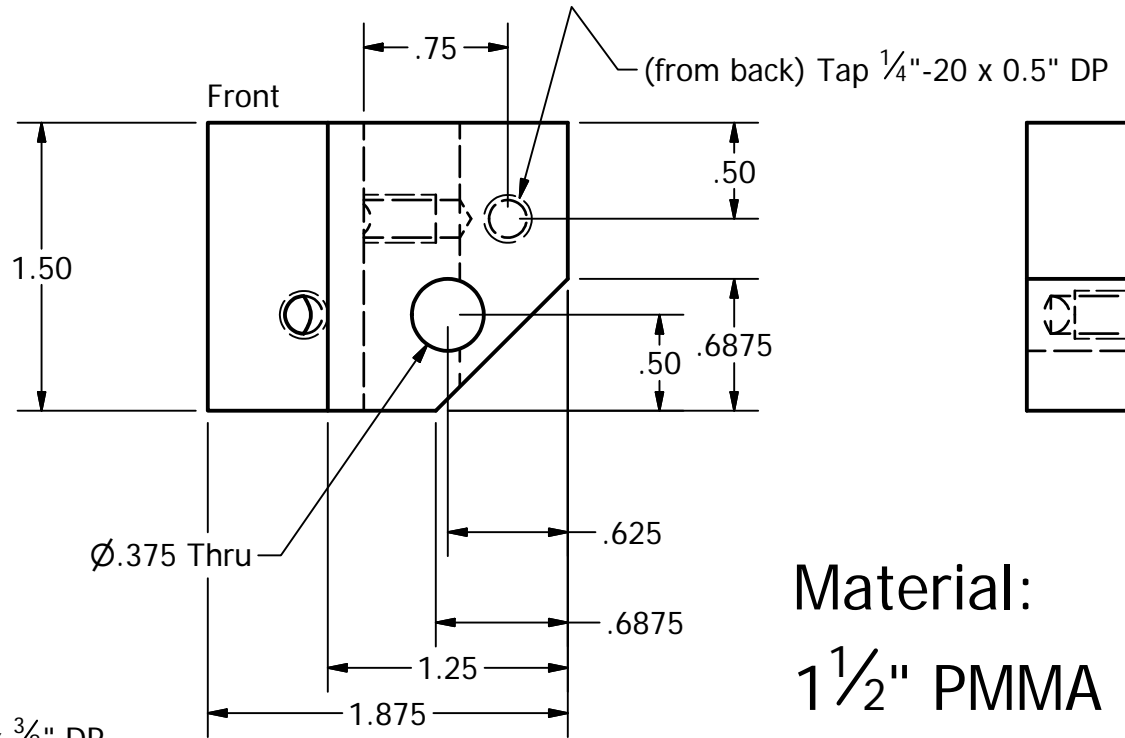
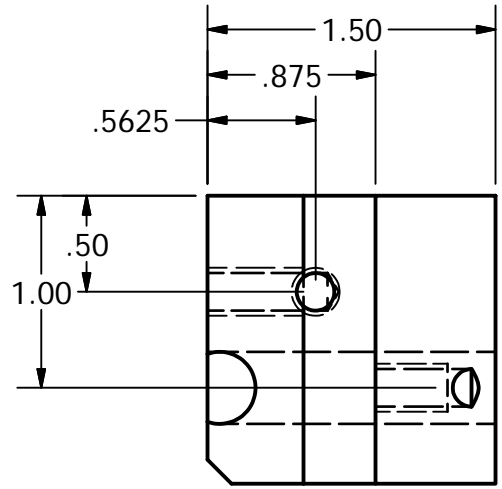
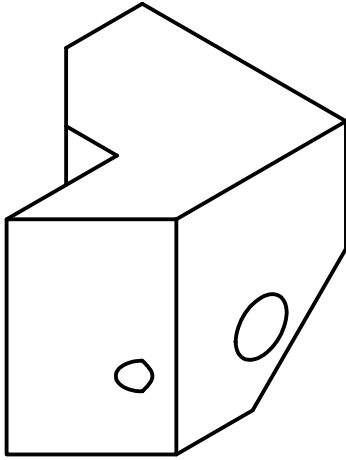
2

1

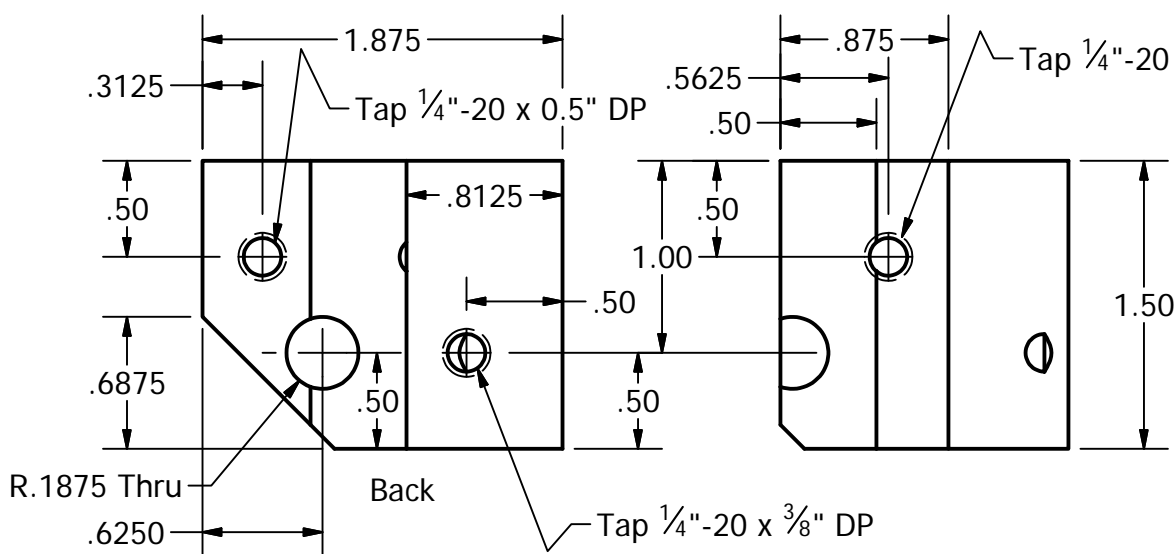
Assembly



Explosion



Material:
1 1/2" PMMA (Plexiglas)



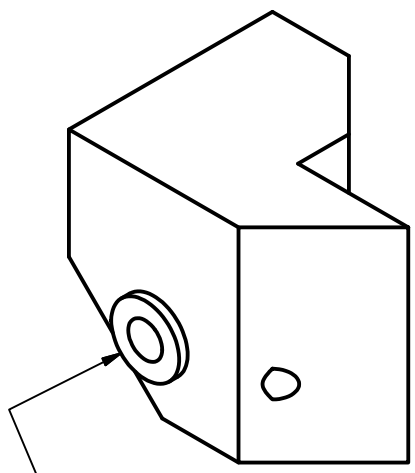
DRAWN Clem	6/12/2010	TITLE	
CHECKED		Possessor Bottom Frame Bearing Block - Left	
QA		SIZE	DWG NO
MFG		B	Dewbot VI new possessor
APPROVED		SCALE	REV
		1 : 1	
		SHEET 6 OF 13	

PRODUCED BY AN AUTODESK EDUCATIONAL PRODUCT

PRODUCED BY AN AUTODESK EDUCATIONAL PRODUCT

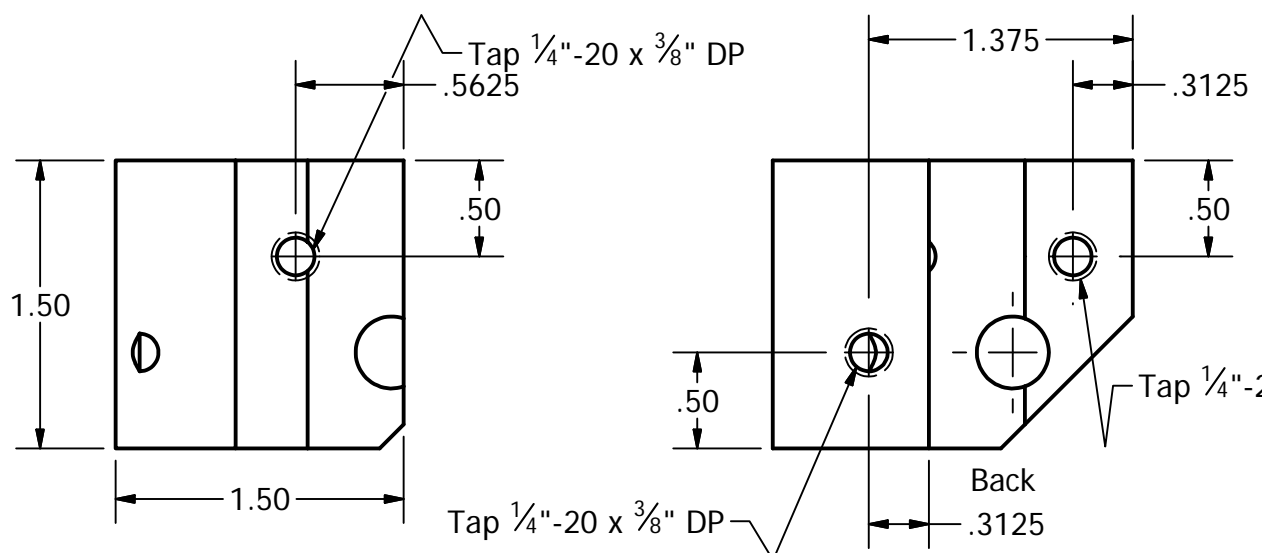
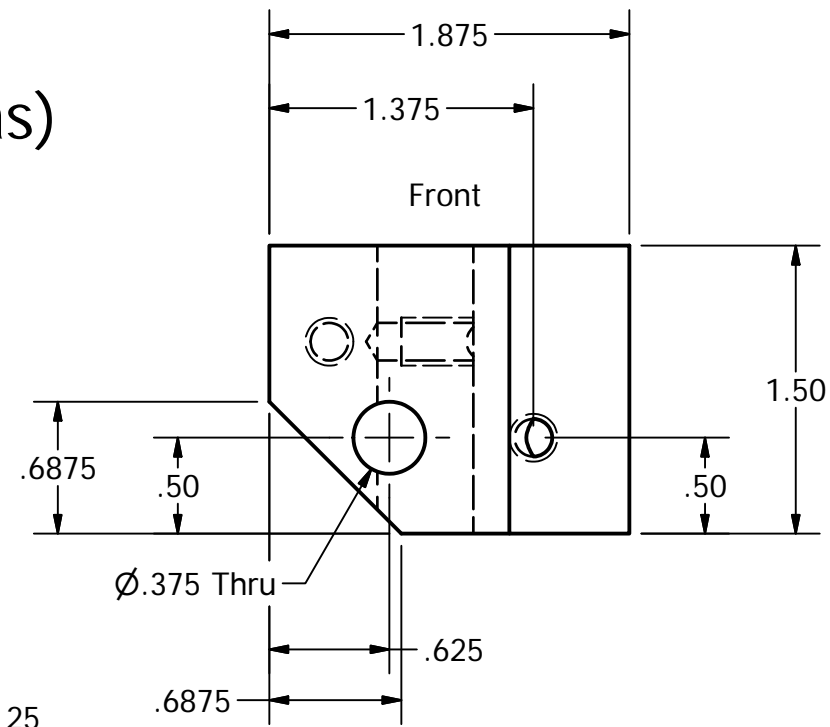
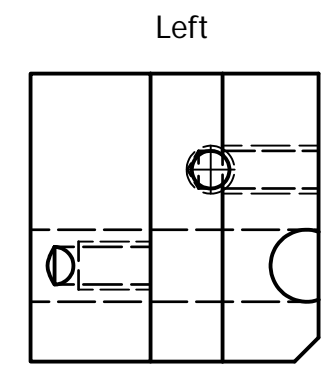
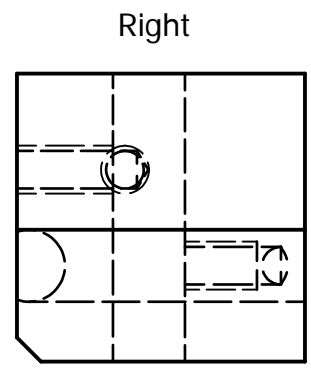
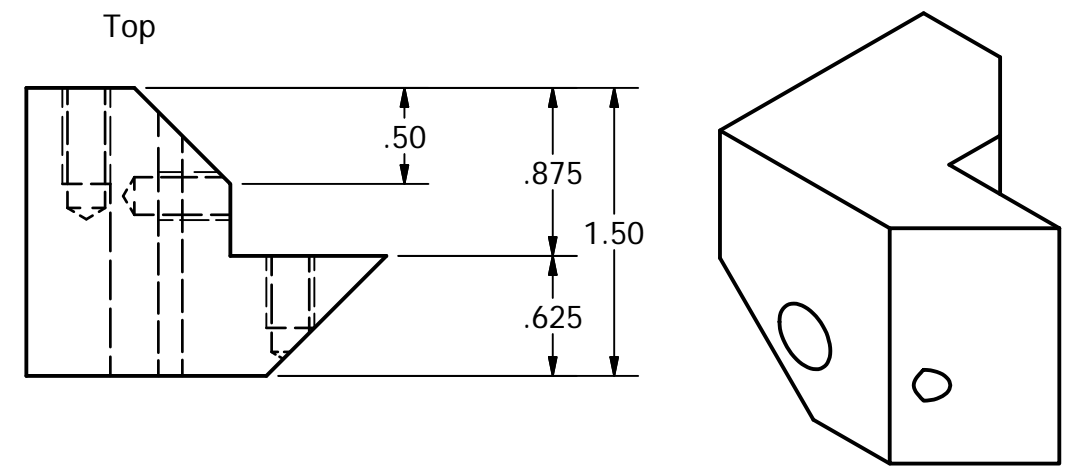
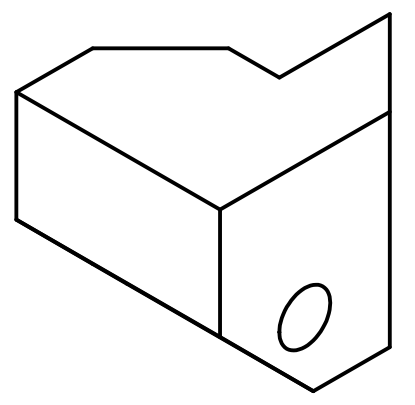
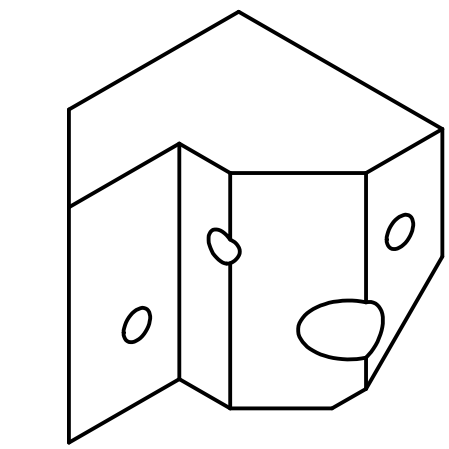
PRODUCED BY AN AUTODESK EDUCATIONAL PRODUCT

PRODUCED BY AN AUTODESK EDUCATIONAL PRODUCT

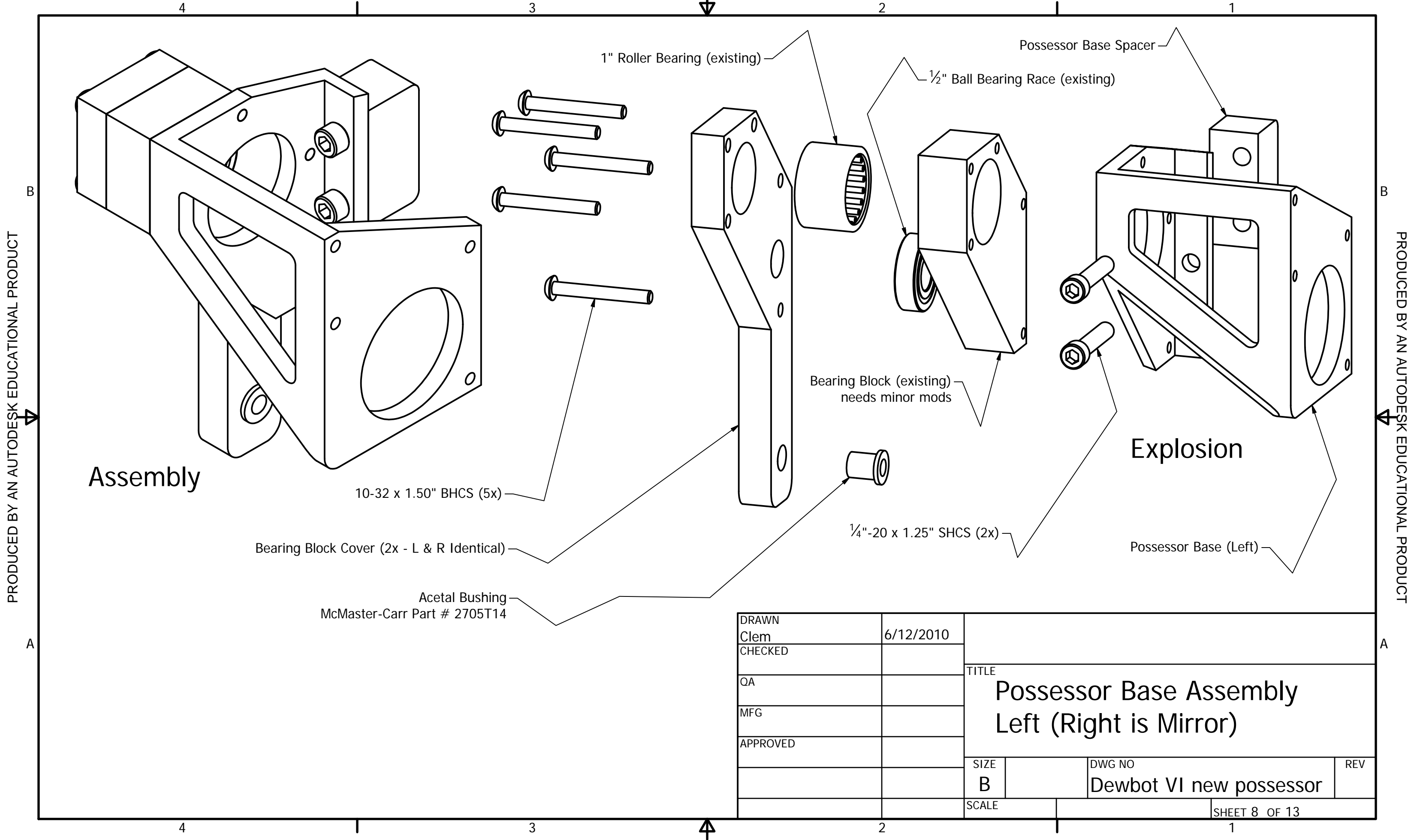


Acetal Bushing
McMaster-Carr Part # 2705T14

Material:
1 1/2" PMMA (Plexiglas)



DRAWN Clem	6/12/2010	TITLE	
CHECKED		Possessor Bottom Frame Bearing Block - Right - Mirror of Left	
QA		SIZE	DWG NO
MFG		B	Dewbot VI new possessor
APPROVED		SCALE	REV
			SHEET 7 OF 13

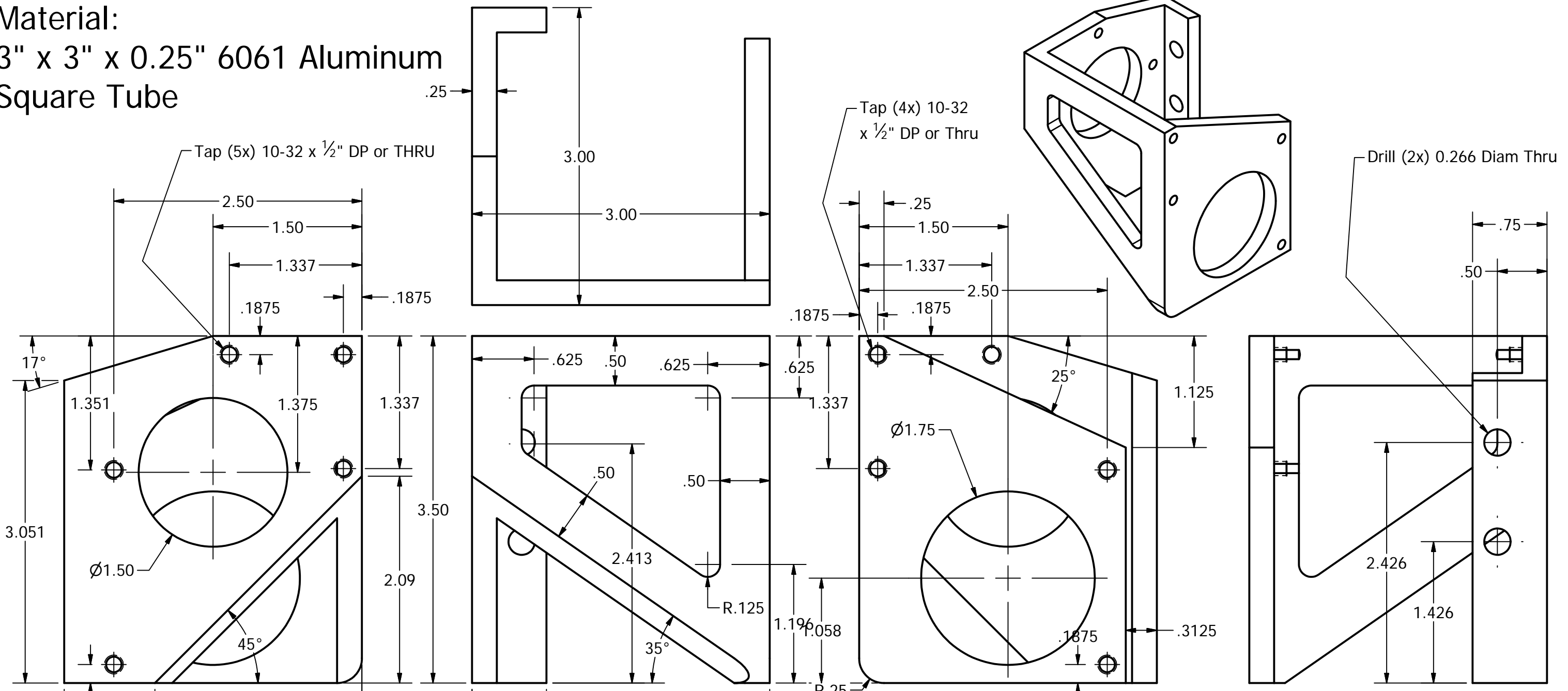


PRODUCED BY AN AUTODESK EDUCATIONAL PRODUCT

PRODUCED BY AN AUTODESK EDUCATIONAL PRODUCT

DRAWN Clem	6/12/2010	TITLE Possessor Base Assembly Left (Right is Mirror)		
CHECKED				
QA				
MFG				
APPROVED		SIZE B	DWG NO Dewbot VI new possessor	REV
		SCALE	SHEET 8 OF 13	

Material:
3" x 3" x 0.25" 6061 Aluminum
Square Tube

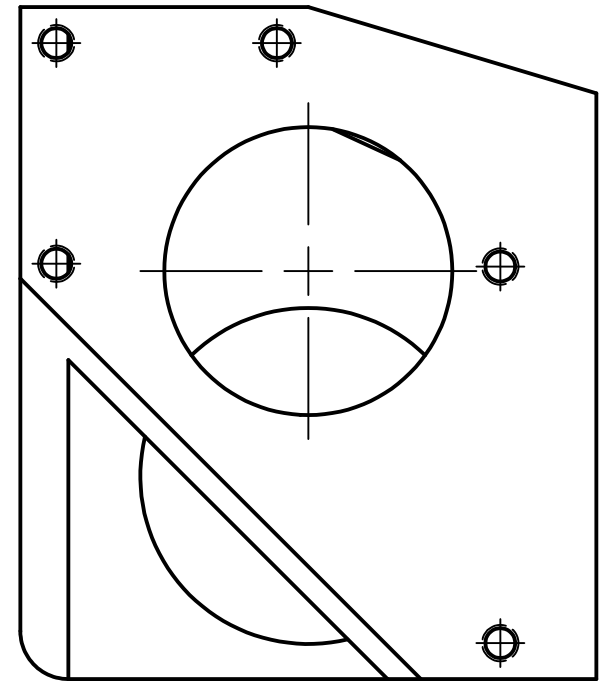
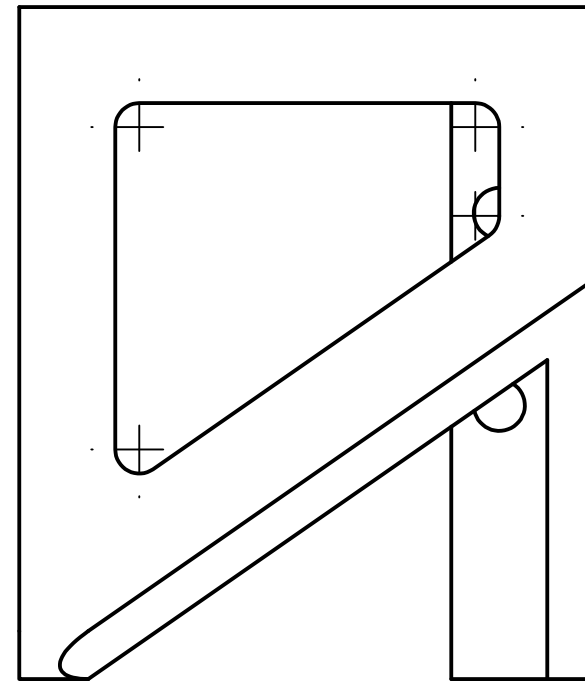
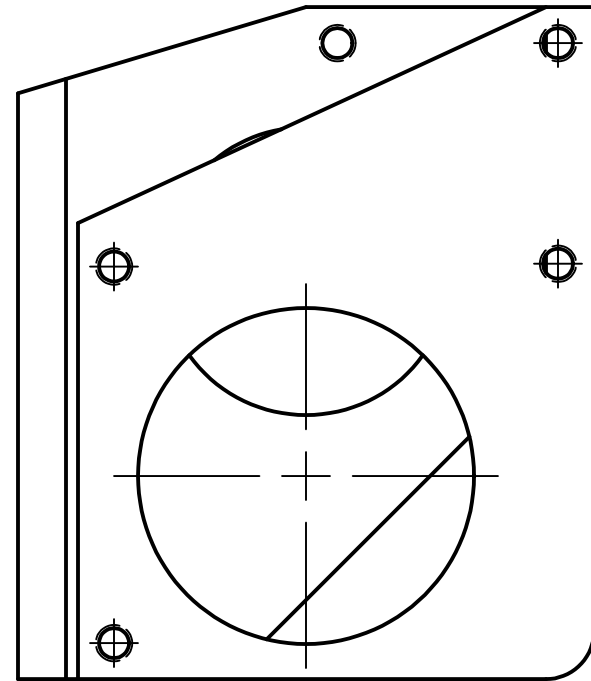
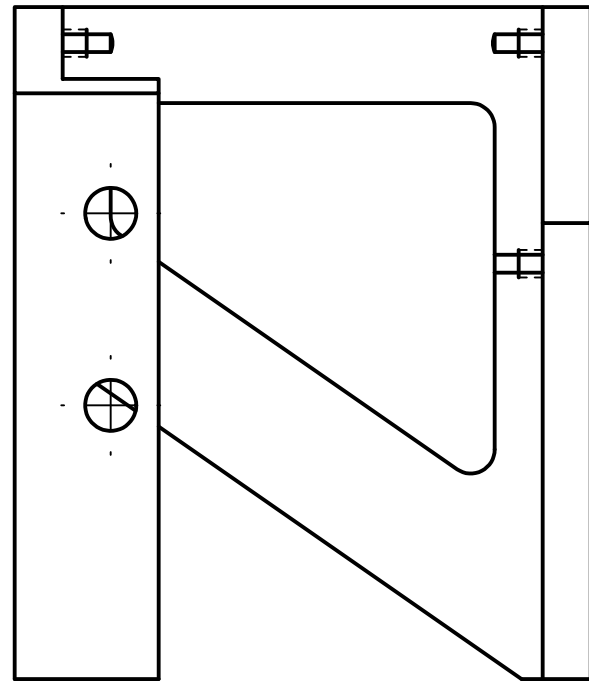
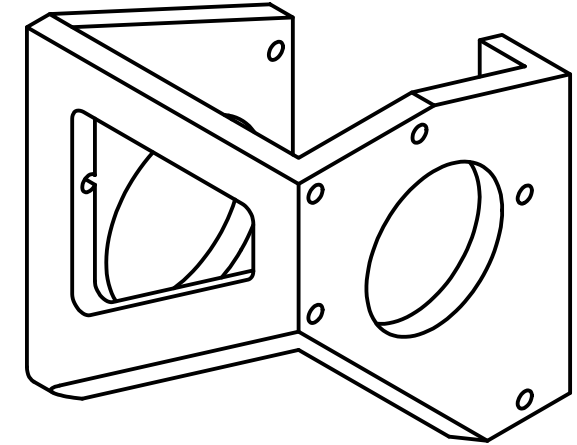
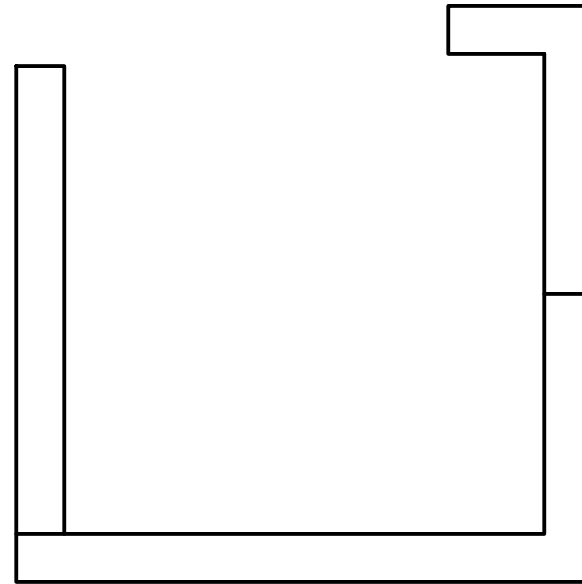


PRODUCED BY AN AUTODESK EDUCATIONAL PRODUCT

PRODUCED BY AN AUTODESK EDUCATIONAL PRODUCT

DRAWN Clem	6/12/2010	TITLE Possessor Base Left (Right is Mirror)	
CHECKED			
QA			
MFG			
APPROVED		SIZE B	DWG NO Dewbot VI new possessor
		SCALE 1 : 1	REV
			SHEET 9 OF 13

Material:
 3" x 3" x 0.25" 6061 Aluminum
 Square Tube



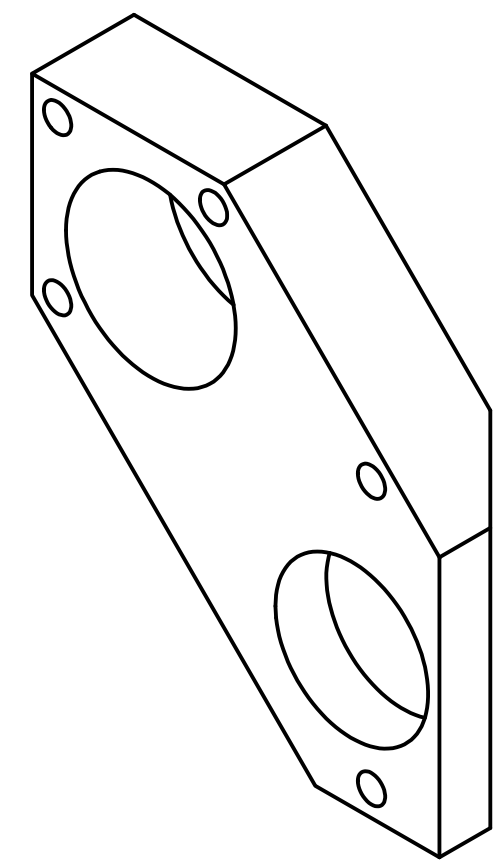
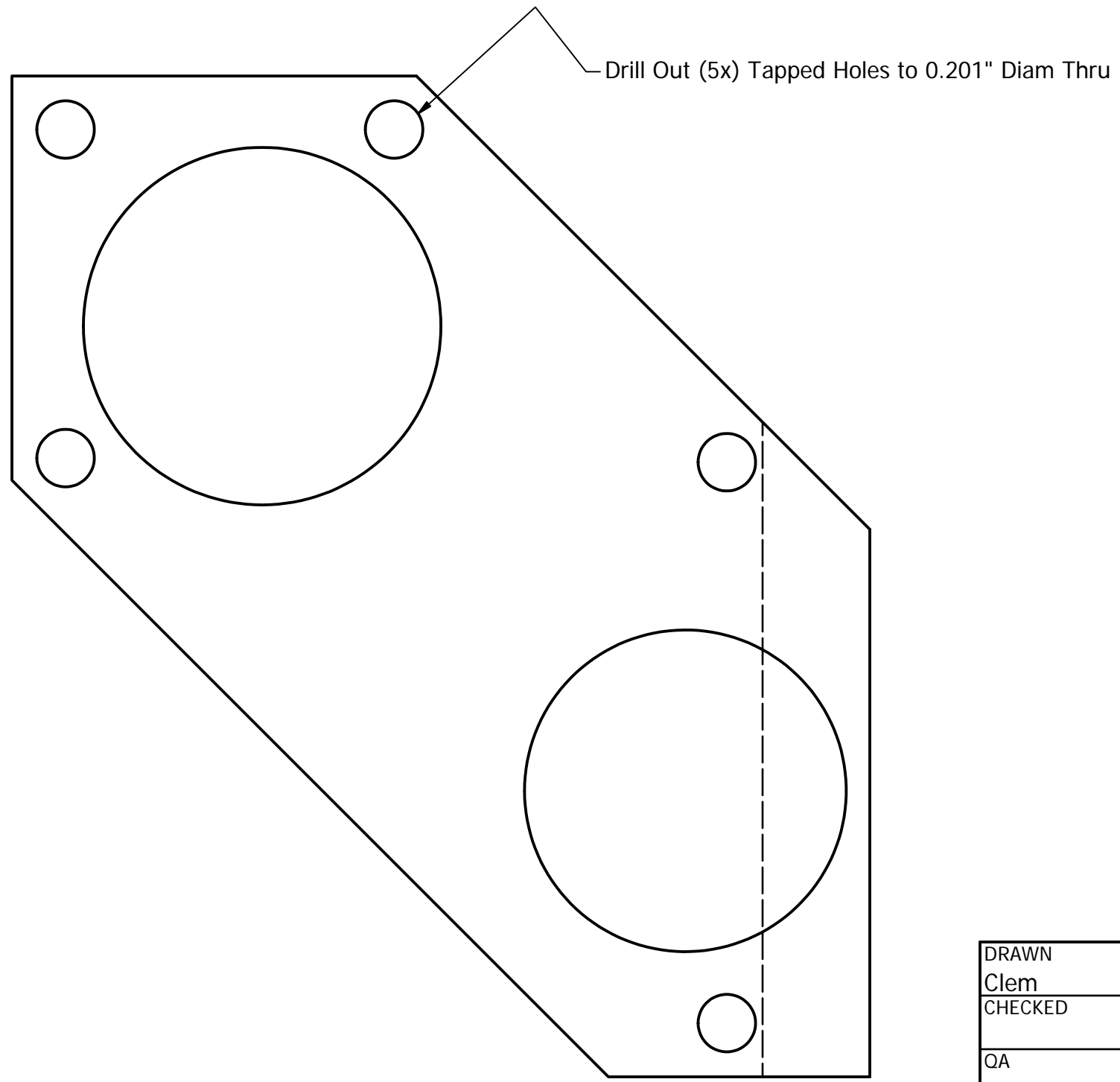
PRODUCED BY AN AUTODESK EDUCATIONAL PRODUCT

PRODUCED BY AN AUTODESK EDUCATIONAL PRODUCT

Reference Sheet 10 for Dimensions & Notes

DRAWN Clem	6/12/2010	TITLE Possessor Base Right (Left is Mirror)		
CHECKED				
QA				
MFG				
APPROVED		SIZE B	DWG NO Dewbot VI new possessor	REV
		SCALE 1 : 1	SHEET 10 OF 13	

4 | 3 | 2 | 1



PRODUCED BY AN AUTODESK EDUCATIONAL PRODUCT

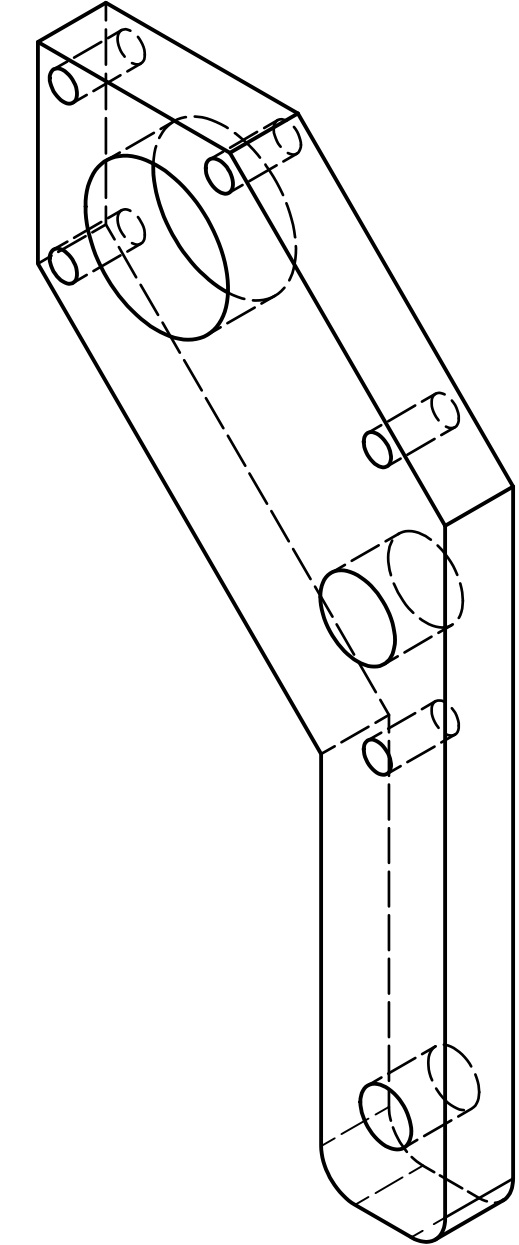
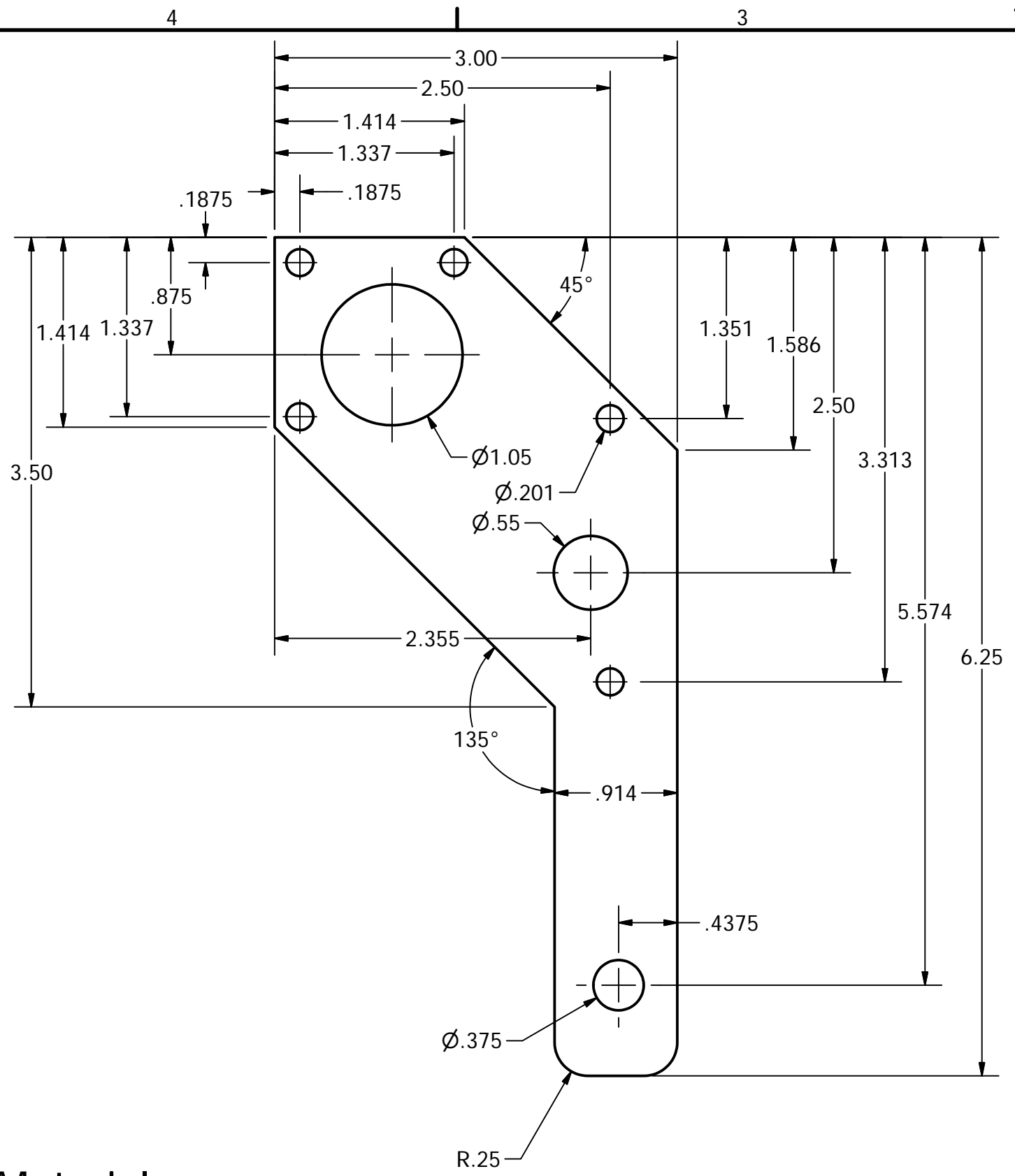
PRODUCED BY AN AUTODESK EDUCATIONAL PRODUCT

DRAWN Clem	6/12/2010	TITLE Bearing Block (L & R - Existing) Right Block Shown		
CHECKED				
QA		SIZE B	DWG NO	REV
MFG		Dewbot VI new possessor		
APPROVED		SCALE 2 : 1		SHEET 11 OF 13

4 | 3 | 2 | 1

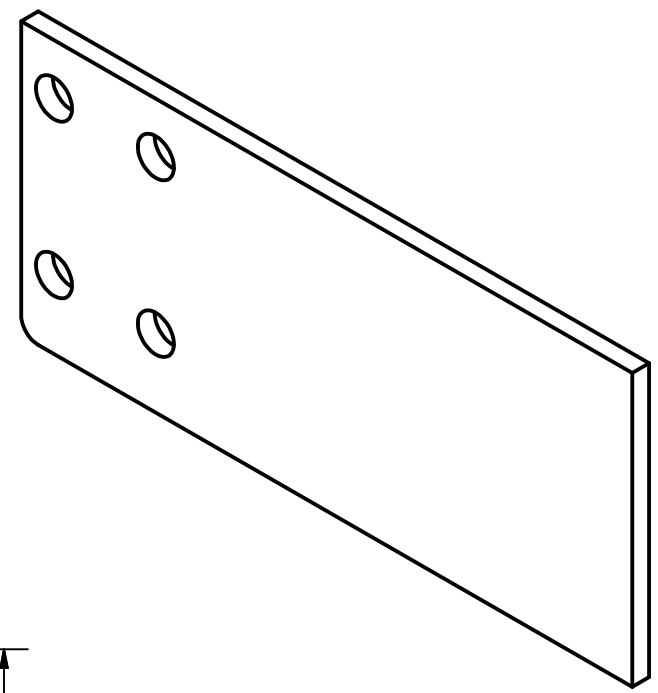
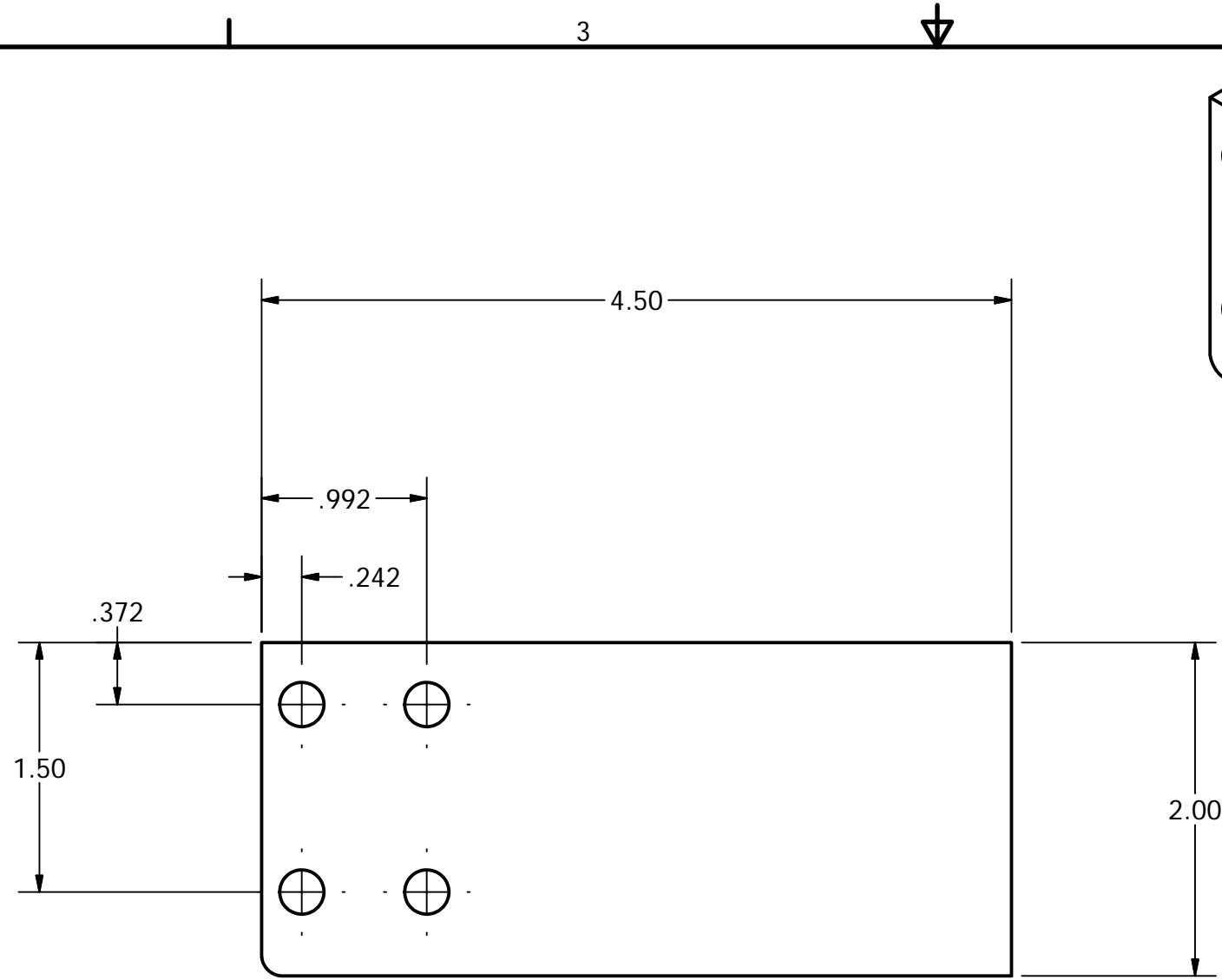
PRODUCED BY AN AUTODESK EDUCATIONAL PRODUCT

PRODUCED BY AN AUTODESK EDUCATIONAL PRODUCT



Material:
 1/2" Thk Polycarbonate

DRAWN Clem	6/12/2010	TITLE Bearing Block Cover (2x required)		
CHECKED				
QA		SIZE B	DWG NO	REV
MFG		Dewbot VI new possessor		
APPROVED		SCALE 1 : 1	SHEET 12 OF 13	



Material:
 $\frac{1}{8}$ " Aluminum Plate

DRAWN Clem	6/12/2010	TITLE Cylinder Base Plate (2x) req'd		
CHECKED				
QA				
MFG				
APPROVED		SIZE B	DWG NO Dewbot VI new possessor	REV
		SCALE 1 : 1	SHEET 13 OF 13	

PRODUCED BY AN AUTODESK EDUCATIONAL PRODUCT

PRODUCED BY AN AUTODESK EDUCATIONAL PRODUCT